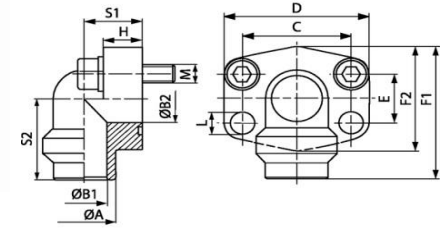


FLLANXHE SAE me kënd 90°, për t'u salduar (për tuba metalik me përmasë METRIKE)..... AFS 90 SRE ( 3000 PSI)

<b>Cilësitë</b>	
<b>Seria e presionit</b>	3000 PSI (210 Bar)
<b>Standarti</b>	SAE J518C dhe ISO 6162
<b>Forma</b>	Me kënd 90°
<b>Dizenjo</b>	Fllanxhë SAE për t'u salduar me tub metalik
<b>Montimi</b>	Me vrima për montim me bulona
<b>Furnizohet</b>	Vetëm fllanxha
<b>Materiali</b>	Çelik S355J2G3 (ST52,3)
<b>Sipërfaqja</b>	E zezë e vajosur

SAE



**HANSA FLEX**

**Shënim**

Presioni maksimal i treguar i referohet fllanxhës. Presioni i punës përcaktohet nga tubi metalik (spesori i tubit) dhe nga cilësia e tubit.

Kodi	Presioni maksimal (Bar)	Size	Tubi metalik	A (mm)	B1 (mm)	B2 (mm)	C (mm)	E (mm)	F1 (mm)	S1 (mm)	S2 (mm)	L (mm)
AFS 80/90 SRE 20	250	1/2"	20 x 3	20	14	13	38.1	17.5	60	20	37	9.0
AFS 80/90 SRE 22	160	1/2"	22 x 2	22	18	13	38.1	17.5	60	20	37	9.0
AFS 80/90 SRE 25	250	1/2"	25 x 3	25	19	13	38.1	17.5	60	20	37	9.0
AFS 80/90 SRE 28	160	1/2"	28 x 3	28	22	13	38.1	17.5	60	20	37	9.0
AFS 100/90 SRE 25	250	3/4"	25 x 3	25	19	19	47.6	22.3	63	24	38	11.0
AFS 100/90 SRE 28	160	3/4"	28 x 3	28	22	19	47.6	22.3	63	24	38	11.0
AFS 100/90 SRE 30	250	3/4"	30 x 4	30	22	19	47.6	22.3	63	24	38	11.0
AFS 100/90 SRE 35	160	3/4"	35 x 4	35	27	19	47.6	22.3	63	24	38	11.0
AFS 102/90 SRE 30	250	1"	30 x 4	30	22	25	52.4	26.2	70	28	43	11.0
AFS 102/90 SRE 35	160	1"	35 x 4	35	27	25	52.4	26.2	70	28	43	11.0
AFS 102/90 SRE 38	250	1"	38 x 4	38	30	25	52.4	26.2	70	28	43	11.0
AFS 102/90 SRE 42	160	1"	42 x 3	42	36	25	52.4	26.2	70	28	43	11.0
AFS 104/90 SRE 38	250	1.1/4"	38 x 4	38	30	32	58.7	30.2	85	34	51	11.5
AFS 104/90 SRE 42	160	1.1/4"	42 x 3	42	36	32	58.7	30.2	85	34	51	11.5
AFS 104/90 SRE 48	160	1.1/4"	48.3 x 4.5	49	39	32	58.7	30.2	85	34	51	11.5
AFS 106/90 SRE 38	210	1.1/2"	38 x 4	38	30	38	69.9	35.7	95	38	56	13.5
AFS 106/90 SRE 42	160	1.1/2"	42 x 3	42	36	38	69.9	35.7	95	38	56	13.5
AFS 106/90 SRE 48	160	1.1/2"	48.3 x 4.5	49	39	38	69.9	35.7	95	38	56	13.5
AFS 108/90 SRE 60	200	2"	60.3 x 5.6	61	49	51	77.8	42.9	110	42	65	13.5
AFS 108/90 SRE 76	200	2"	76.1 x 7.1	77	62	51	77.8	42.9	110	42	65	13.5

**EMC ENGINEERING Maintenance Center**

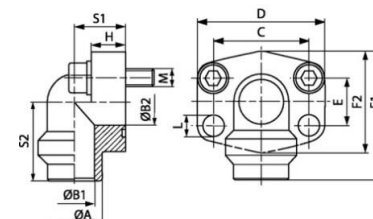
**EMC Engineering Maintenance Center**

Duke kontrolluar prurjen kontrollohet edhe shpejtësia e levizjes së organeve të punës të sistemit hidraulik. Si realizohet?

FLLANXHE SAE me kënd 90°, për t'u salduar (për tuba metalik me përmasë METRIKE)..... AFS 90 SRE ( 6000 PSI)

<b>Cilësitë</b>	
<b>Seria e presionit</b>	6000 PSI (420 Bar)
<b>Standarti</b>	SAE J518C dhe ISO 6162
<b>Forma</b>	Me kënd 90°
<b>Dizenjo</b>	Fllanxhë SAE për t'u salduar me tub metalik
<b>Montimi</b>	Me vrima për montim me bulona
<b>Furnizohet</b>	Vetëm fllanxha
<b>Materiali</b>	Çelik S355J2G3 (ST52,3)
<b>Sipërfaqja</b>	E zezë e vajosur

SAE



**HANSA FLEX**

**Shënim**

Presioni maksimal i treguar i referohet fllanxhës. Presioni i punës përcaktohet nga tubi metalik (spesori i tubit) dhe nga cilësia e tubit.

Kodi	Presioni maksimal (Bar)	Size	Tubi metalik	A (mm)	B1 (mm)	B2 (mm)	C (mm)	E (mm)	F1 (mm)	S1 (mm)	S2 (mm)	L (mm)
AFS 401/90 SRE 20	315	1/2"	20 x 3	20	14	13	40.5	18.2	60	20	37	9.0
AFS 401/90 SRE 25	315	1/2"	25 x 4	25	17	13	40.5	18.2	60	20	37	9.0
AFS 402/90 SRE 25	315	3/4"	25 x 4	25	17	19	50.8	23.8	70	28	43	11.0
AFS 402/90 SRE 30	315	3/4"	30 x 4	30	22	19	50.8	23.8	70	28	43	11.0
AFS 403/90 SRE 30	315	1"	30 x 4	30	22	25	57.2	27.8	85	34	51	13.0
AFS 403/90 SRE 38	315	1"	38 x 5	38	28	25	57.2	27.8	85	34	51	13.0
AFS 404/90 SRE 38	315	1.1/4"	38 x 5	38	28	32	66.6	31.8	95	38	56	-
AFS 404/90 SRE 48	315	1.1/4"	48.3 x 8	49	32	32	66.6	31.8	95	38	56	-
AFS 405/90 SRE 38	315	1.1/2"	38 x 5	38	28	38	79.3	36.5	110	42	65	17.0
AFS 405/90 SRE 48	315	1.1/2"	48.3 x 8	49	32	38	79.3	36.5	110	42	65	17.0
AFS 405/90 SRE 60	315	1.1/2"	60.3 x 10	61	40	38	79.3	36.5	110	42	65	17.0
AFS 406/90 SRE 60	315	2"	60.3 x 10	61	40	51	96.8	44.5	133	45	75	21.0
AFS 406/90 SRE 76	315	2"	76.1 x 12.5	74	50	51	96.8	44.5	150	45	92	21.0



**EMC Engineering Maintenance Center**

Duke shfletuar katalogjet e HANSA FLEX, ju mund të shihni edhe materiale të tjera që mund t'ju nevojiten në punën tuaj.

Ju garantojmë një çmim fantastik në raport me cilësinë e materialeve.

Në ju ndihmojmë të identifikoni edhe më shpejt materialet që ju nevojiten.

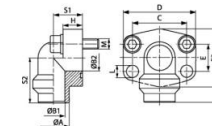


**HANSA FLEX**

**FLLANXHE SAE me kënd 90°, për t'u salduar (për tuba metalik me përmasë METRIKE)..... AFS 90 SRE M ( 3000/6000 PSI)**

<b>Cilësitë</b>	
<b>Standarti</b>	SAE J518C dhe ISO 6162
<b>Forma</b>	Me kënd 90°
<b>Dizenjo</b>	Fllanxhë SAE për t'u salduar me tub metalik
<b>Montimi</b>	Me vrima për montim me bulona
<b>Furnizohet së bashku me</b>	Set-in e bulonave METRIK dhe guarnicionin O-Ring
<b>Materiali</b>	Çelik S355J2G3 (ST52,3), me sipërfaqe të zeze të vajosur

**SAE**

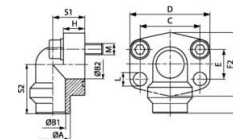


Kodi	Seria	P.max. (Bar)	Size	Tubi	A (mm)	B1 (mm)	B2 (mm)	C (mm)	D (mm)	E (mm)	F1 (mm)	F2 (mm)	H (mm)	S1 (mm)	S2 (mm)	L (mm)	Bulonat
AFS 80/90 SRE20M	3000 PSI	250	1/2"	20 x 3	20	14	13	38.1	54.0	17.5	60	48	16	20	37	9.0	(4 x)M8x30
AFS 80/90 SRE 22 M	3000 PSI	160	1/2"	22 x 2	22	18	13	38.1	54.0	17.5	60	48	16	20	37	9.0	(4 x) M8x30
AFS 80/90 SRE 25 M	3000 PSI	250	1/2"	25 x 3	25	19	13	38.1	54.0	17.5	60	48	16	20	37	9.0	(4 x) M8x30
AFS 80/90 SRE 28 M	3000 PSI	160	1/2"	28 x 3	28	22	13	38.1	54.0	17.5	60	48	16	20	37	9.0	(4 x) M8x30
AFS 100/90 SRE 25 M	3000 PSI	250	3/4"	25 x 3	25	19	19	47.6	65.0	22.3	63	50	18	24	38	11.0	(4 x)M10x35
AFS 100/90 SRE 28 M	3000 PSI	160	3/4"	28 x 3	28	22	19	47.6	65.0	22.3	63	50	18	24	38	11.0	(4 x)M10x35
AFS 100/90 SRE 30 M	3000 PSI	250	3/4"	30 x 4	30	22	19	47.6	65.0	22.3	63	50	18	24	38	11.0	(4 x) M10x35
AFS 100/90 SRE 35 M	3000 PSI	160	3/4"	35 x 4	35	27	19	47.6	65.0	22.3	63	50	18	24	38	11.0	(4 x) M10x35
AFS 102/90 SRE 30 M	3000 PSI	250	1"	30 x 4	30	22	25	52.4	70.0	26.2	70	60	19	28	43	11.0	(4 x) M10x35
AFS 102/90 SRE 35 M	3000 PSI	160	1"	35 x 4	35	27	25	52.4	70.0	26.2	70	60	19	28	43	11.0	(4 x) M10x35
AFS 102/90 SRE 38 M	3000 PSI	250	1"	38 x 4	38	30	25	52.4	70.0	26.2	70	60	19	28	43	11.0	(4 x) M10x35
AFS 102/90 SRE 42 M	3000 PSI	160	1"	42 x 3	42	36	25	52.4	70.0	26.2	70	60	19	28	43	11.0	(4 x) M10x35
AFS 104/90 SRE 38 M	3000 PSI	250	1.1/4"	38 x 4	38	30	32	58.7	79.0	30.2	85	68	21	34	51	11.5	(4 x) M10x40
AFS 104/90 SRE 42 M	3000 PSI	160	1.1/4"	42 x 3	42	36	32	58.7	79.0	30.2	85	68	21	34	51	11.5	(4 x) M10x40
AFS 104/90 SRE 48 M	3000 PSI	160	1.1/4"	48.3 x 4.5	49	39	32	58.7	79.0	30.2	85	68	21	34	51	11.5	(4 x) M10x40
AFS 106/90 SRE 38 M	3000 PSI	210	1.1/2"	38 x 4	38	30	38	69.9	93.0	35.7	95	78	25	38	56	13.5	(4 x) M12x45
AFS 106/90 SRE 42 M	3000 PSI	160	1.1/2"	42 x 3	42	36	38	69.9	93.0	35.7	95	78	25	38	56	13.5	(4 x) M12x45
AFS 106/90 SRE 48 M	3000 PSI	160	1.1/2"	48.3 x 4.5	49	39	38	69.9	93.0	35.7	95	78	25	38	56	13.5	(4 x) M12x45
AFS 108/90 SRE 60 M	3000 PSI	200	2"	60.3 x 5.6	61	49	51	77.8	110.0	42.9	110	90	25	42	65	13.5	(4 x) M12x45
AFS 108/90 SRE 76 M	3000 PSI	200	2"	76.1 x 7.1	77	62	51	77.8	110.0	42.9	110	90	25	42	65	13.5	(4 x) M12x45
AFS 401/90 SRE 20 M	6000 PSI	315	1/2"	20 x 3	20	14	13	40.5	56.4	18.2	60	48	16	20	37	9.0	(4 x) M8x30
AFS 401/90 SRE 25 M	6000 PSI	315	1/2"	25 x 4	25	17	13	40.5	56.4	18.2	60	48	16	20	37	9.0	(4 x) M 8x30
AFS 402/90 SRE 25 M	6000 PSI	315	3/4"	25 x 4	25	17	19	50.8	71.3	23.8	70	60	19	28	43	11.0	(4 x) M 10x35
AFS 402/90 SRE 30 M	6000 PSI	315	3/4"	30 x 4	30	22	19	50.8	71.3	23.8	70	60	19	28	43	11.0	(4 x) M 10x35
AFS 403/90 SRE 30 M	6000 PSI	315	1"	30 x 4	30	22	25	57.2	81.0	27.8	85	70	21	34	51	13.0	(4 x) M 12x45
AFS 403/90 SRE 38 M	6000 PSI	315	1"	38 x 5	38	28	25	57.2	81.0	27.8	85	70	21	34	51	13.0	(4 x) M 12x45
AFS 404/90 SRE 38 M	6000 PSI	315	1.1/4"	38 x 5	38	28	32	66.6	95.2	31.8	95	78	25	38	56	14.5	(4 x) M 14x45
AFS 404/90 SRE 48 M	6000 PSI	315	1.1/4"	48.3 x 8	49	32	32	66.6	95.2	31.8	95	78	25	38	56	14.5	(4 x) M 14x45
AFS 405/90 SRE 38 M	6000 PSI	315	1.1/2"	38 x 5	38	28	38	79.3	112.8	36.5	110	94	25	42	65	17.0	(4 x) M 16x50
AFS 405/90 SRE 48 M	6000 PSI	315	1.1/2"	48.3 x 8	49	32	38	79.3	112.8	36.5	110	94	25	42	65	17.0	(4 x) M 16x50
AFS 405/90 SRE 60 M	6000 PSI	315	1.1/2"	60.3 x 10	61	40	38	79.3	112.8	36.5	110	94	25	42	65	17.0	(4 x) M 16x50
AFS 406/90 SRE 60 M	6000 PSI	315	2"	60.3 x 10	61	40	51	96.8	136.0	44.5	133	108	35	45	75	21.0	(4 x)M20x110
AFS 406/90 SRE 76 M	6000 PSI	315	2"	76.1 x 12.5	74	50	51	96.8	134.0	44.5	150	106	35	45	92	21.0	(4 x)M20x110

**FLLANXHE SAE me kënd 90°, për t'u salduar (për tuba metalik me përmasë METRIKE)..... AFS 90 SRE U ( 3000/6000 PSI)**

<b>Cilësitë</b>	
<b>Standarti</b>	SAE J518C dhe ISO 6162
<b>Forma</b>	Me kënd 90°
<b>Dizenjo</b>	Fllanxhë SAE për t'u salduar me tub metalik
<b>Montimi</b>	Me vrima për montim me bulona
<b>Furnizohet së bashku me</b>	Set-in e bulonave UNC dhe guarnicionin O-Ring
<b>Materiali</b>	Çelik S355J2G3 (ST52,3), me sipërfaqe të zezë të vajosur

**SAE**

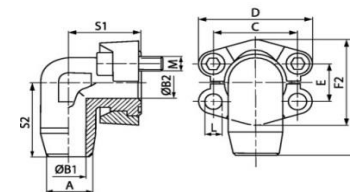


Kodi	Seria	P.max (Bar)	Size	Tubi	A (mm)	B1 (mm)	B2 (mm)	C (mm)	D (mm)	E (mm)	F1(mm)	F2 (mm)	H (mm)	S1 (mm)	S2 (mm)	L (mm)	Bulonat
AFS 80/90 SRE 20 U	6000 PSI	250	1/2"	20 x 3	20	14	13	38.1	54.0	17.5	60	48	16	20	37	9.0	(4x)UNC5/16x1.1/4
AFS 80/90 SRE 22 U	6000 PSI	160	1/2"	22 x 2	22	18	13	38.1	54.0	17.5	60	48	16	20	37	9.0	(4x)UNC5/16x1.1/4
AFS 80/90 SRE 25 U	6000 PSI	250	1/2"	25 x 3	25	19	13	38.1	54.0	17.5	60	48	16	20	37	9.0	(4x)UNC5/16x1.1/4
AFS 80/90 SRE 28 U	6000 PSI	160	1/2"	28 x 3	28	22	13	38.1	54.0	17.5	60	48	16	20	37	9.0	(4x)UNC5/16x1.1/4
AFS 100/90 SRE 25 U	6000 PSI	250	3/4"	25 x 3	25	19	19	47.6	65.0	22.3	63	50	18	24	38	11.0	(4x)UNC3/8x1.1/2
AFS 100/90 SRE 28 U	6000 PSI	160	3/4"	28 x 3	28	22	19	47.6	65.0	22.3	63	50	18	24	38	11.0	(4x)UNC3/8x1.1/2
AFS 100/90 SRE 30 U	6000 PSI	250	3/4"	30 x 4	30	22	19	47.6	65.0	22.3	63	50	18	24	38	11.0	(4x)UNC3/8x1.1/2
AFS 100/90 SRE 35 U	6000 PSI	160	3/4"	35 x 4	35	27	19	47.6	65.0	22.3	63	50	18	24	38	11.0	(4x)UNC3/8x1.1/2
AFS 102/90 SRE 30 U	6000 PSI	250	1"	30 x 4	30	22	25	52.4	70.0	26.2	70	60	19	28	43	11.0	(4x)UNC3/8x1.1/2
AFS 102/90 SRE 35 U	6000 PSI	160	1"	35 x 4	35	27	25	52.4	70.0	26.2	70	60	19	28	43	11.0	(4x)UNC3/8x1.1/2
AFS 102/90 SRE 38 U	6000 PSI	250	1"	38 x 4	38	30	25	52.4	70.0	26.2	70	60	19	28	43	11.0	(4x)UNC3/8x1.1/2
AFS 102/90 SRE 42 U	6000 PSI	160	1"	42 x 3	42	36	25	52.4	70.0	26.2	70	60	19	28	43	11.0	(4x)UNC3/8x1.1/2
AFS 104/90 SRE 38 U	6000 PSI	250	1.1/4"	38 x 4	38	30	32	58.7	79.0	30.2	85	68	21	34	51	11.5	(4x)UNC7/16x1.1/2
AFS 104/90 SRE 42 U	6000 PSI	160	1.1/4"	42 x 3	42	36	32	58.7	79.0	30.2	85	68	21	34	51	11.5	(4x)UNC7/16x1.1/2
AFS 104/90 SRE 48 U	6000 PSI	160	1.1/4"	48.3 x 4.5	49	39	32	58.7	79.0	30.2	85	68	21	34	51	11.5	(4x)UNC7/16x1.1/2
AFS 106/90 SRE 38 U	6000 PSI	210	1.1/2"	38 x 4	38	30	38	69.9	93.0	35.7	95	78	25	38	56	13.5	(4x)UNC1/2x1.3/4
AFS 106/90 SRE 42 U	6000 PSI	160	1.1/2"	42 x 3	42	36	38	69.9	93.0	35.7	95	78	25	38	56	13.5	(4x)UNC1/2x1.3/4
AFS 106/90 SRE 48 U	6000 PSI	160	1.1/2"	48.3 x 4.5	49	39	38	69.9	93.0	35.7	95	78	25	38	56	13.5	(4x)UNC1/2x1.3/4
AFS 108/90 SRE 60 U	6000 PSI	200	2"	60.3 x 5.6	61	49	51	77.8	110.0	42.9	110	90	25	42	65	13.5	(4x)UNC1/2x1.3/4
AFS 108/90 SRE 76 U	6000 PSI	200	2"	76.1 x 7.1	77	62	51	77.8	110.0	42.9	110	90	25	42	65	13.5	(4x)UNC1/2x1.3/4
AFS 401/90 SRE 20 U	6000 PSI	315	1/2"	20 x 3	20	14	13	40.5	56.4	18.2	60	48	16	20	37	9.0	(4x)UNC5/16x1.1/4
AFS 401/90 SRE 25 U	6000 PSI	315	1/2"	25 x 4	25	17	13	40.5	56.4	18.2	60	48	16	20	37	9.0	(4x)UNC5/16x1.1/4
AFS 402/90 SRE 25 U	6000 PSI	315	3/4"	25 x 4	25	17	19	50.8	71.3	23.8	70	60	19	28	43	11.0	(4x)UNC3/8x1.1/2
AFS 402/90 SRE 30 U	6000 PSI	315	3/4"	30 x 4	30	22	19	50.8	71.3	23.8	70	60	19	28	43	11.0	(4x)UNC3/8x1.1/2
AFS 403/90 SRE 30 U	6000 PSI	315	1"	30 x 4	30	22	25	57.2	81.0	27.8	85	70	21	34	51	13.0	(4x)UNC7/16x1.1/2
AFS 403/90 SRE 38 U	6000 PSI	315	1"	38 x 5	38	28	25	57.2	81.0	27.8	85	70	21	34	51	13.0	(4x)UNC7/16x1.1/2
AFS 404/90 SRE 38 U	6000 PSI	315	1.1/4"	38 x 5	38	28	32	66.6	95.2	31.8	95	78	25	38	56	13.5	(4x)UNC1/2x1.3/4
AFS 404/90 SRE 48 U	6000 PSI	315	1.1/4"	48.3 x 8	49	32	32	66.6	95.2	31.8	95	78	25	38	56	13.5	(4x)UNC1/2x1.3/4
AFS 405/90 SRE 38 U	6000 PSI	315	1.1/2"	38 x 5	38	28	38	79.3	112.8	36.5	110	94	25	42	65	17.0	(4x)UNC5/8x2
AFS 405/90 SRE 48 U	6000 PSI	315	1.1/2"	48.3 x 8	49	32	38	79.3	112.8	36.5	110	94	25	42	65	17.0	(4 x) UNC 5/8 x 2
AFS 405/90 SRE 60 U	6000 PSI	315	1.1/2"	60.3 x 10	61	40	38	79.3	112.8	36.5	110	94	25	42	65	17.0	(4 x) UNC 5/8 x 2

FLLANXE SAE me kënd 90°, për t'u salduar (për tuba metalik me përmasë METRIKE)..... WFS (3000 PSI)

<b>Cilësitë</b>	
<b>Seria e presionit</b>	3000 PSI (210 Bar)
<b>Standarti</b>	SAE J518C dhe ISO 6162
<b>Forma</b>	Me kënd 90°
<b>Dizenjo</b>	Fllanxhë SAE për t'u salduar me tub metalik
<b>Furnizohet</b>	Vetëm fllanxa
<b>Materiali</b>	Çelik S355J2G3 (ST52,3)
<b>Sipërfaqja</b>	E zezë e vajosur

**SAE**



**HANSA FLEX**

**Shënim**

Presioni maksimal i treguar i referohet fllanxhës. Presioni i punës përcaktohet nga tubi metalik (spesori i tubit) dhe nga cilësia e tubit.

Kodi	Presioni maksimal (Bar)	Size	A (mm)	B1 (mm)	B2 (mm)	C (mm)	D (mm)	E (mm)	F1 (mm)	F2 (mm)	S1 (mm)	S2 (mm)	L (mm)
WFS 3001-15	350	1/2"	15	11	11	38.1	54.0	17.5	60.8	45.6	39	38	8.7
WFS 3001-16	350	1/2"	16	10	10	38.1	54.0	17.5	60.8	45.6	39	38	8.7
WFS 3002-18	350	3/4"	18	15	19	47.6	64.9	22.2	70.9	51.8	42	45	10.7
WFS 3002-20	350	3/4"	20	14	17	47.6	64.9	22.2	70.9	51.8	42	45	10.7
WFS 3002-22	350	3/4"	22	18	19	47.6	64.9	22.2	70.9	51.8	42	45	10.7
WFS 3002-25	350	3/4"	25	17	17	47.6	64.3	22.2	70.9	51.8	42	45	10.7
WFS 3003-25	315	1"	25	19	21	52.4	69.9	26.2	79.2	58.4	45	50	10.7
WFS 3003-28	315	1"	28	24	25	52.4	69.9	26.2	79.2	58.4	45	50	10.7
WFS 3003-30	315	1"	30	21	21	52.4	69.9	26.2	79.2	58.4	45	50	10.7
WFS 3004-25	250	1.1/4"	25	19	27	58.7	79.4	30.2	85.3	72.6	50	59	-
WFS 3004-30	250	1.1/4"	30	22	27	58.7	79.4	30.2	85.3	72.6	50	50	-
WFS 3004-35	250	1.1/4"	35	31	32	58.7	79.4	30.2	85.3	72.6	50	59	-
WFS 3004-38	250	1.1/4"	38	28	27	56.7	79.4	30.2	85.3	72.6	50	59	-
WFS 3005-38	200	1.1/2"	38	30	32	69.9	93.8	35.7	117.1	82.2	76	76	13.5
WFS 3005-42	200	1.1/2"	42	36	36	69.9	93.8	35.7	117.1	82.2	76	76	13.5



**EMC Engineering Maintenance Center**

Një koncept i gabuar që qarkullon tek pothuajse të gjithë teknikës që kanë njohuri jo të thella në fushën e hidraulikës është që "meqenëse në komponentët hidraulik qarkullon vaj, nuk ka nevojë për ndonjë vëmendje të madhe gjatë montimit të komponentëve hidraulik dhe lidhjes së tyre me tuba.

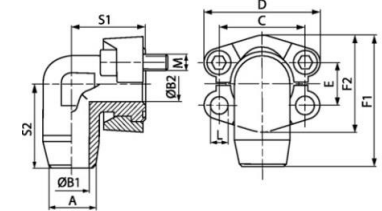


**HANSA FLEX**

FLLANXHE SAE me kënd 90°, për t'u salduar (për tuba metalik me përmasë METRIKE)..... WFS (6000 PSI)

<b>Cilësitë</b>	
<b>Seria e presionit</b>	6000 PSI (420 Bar)
<b>Standarti</b>	SAE J518C dhe ISO 6162
<b>Forma</b>	Me kënd 90°
<b>Dizenjo</b>	Fllanxhë SAE për t'u salduar me tub metalik
<b>Furnizohet</b>	Vetëm fllanxha
<b>Materiali</b>	Çelik S355J2G3 (ST52,3)
<b>Sipërfaqja</b>	E zezë e vajosur

SAE



**Shënim**

Presioni maksimal i treguar i referohet fllanxhës. Presioni i punës përcaktohet nga tubi metalik (spesori i tubit) dhe nga cilësia e tubit.

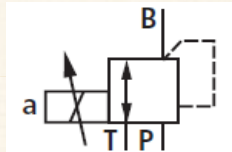
**HANSA FLEX**

Kodi	Presioni maksimal (Bar)	Size	A (mm)	B1 (mm)	B2 (mm)	C (mm)	D (mm)	E (mm)	F1 (mm)	F2 (mm)	S1 (mm)	S2 (mm)	L (mm)
WFS 6001-16	400	1/2"	16	10	10	40.5	56.0	18.2	61.6	47.2	39	38	8.7
WFS 6002-16	400	3/4"	16	10	17	50.8	71.0	23.8	78.0	60.0	48	48	10.7
WFS 6002-20	400	3/4"	20	12	17	50.8	71.0	23.8	78.0	60.0	48	48	10.7
WFS 6002-25	400	3/4"	25	15	17	50.8	71.0	23.8	78.0	60.0	48	48	10.7
WFS 6003-25	400	1"	25	15	20	57.2	81.0	27.8	94.0	69.6	60	60	-
WFS 6003-30	400	1"	30	22	25	57.2	81.0	27.8	94.0	69.6	60	60	-
WFS 6004-30	315	1.1/4"	30	22	27	66.7	95.0	31.8	106.6	77.2	68	68	-
WFS 6004-38	315	1.1/4"	38	28	30	66.7	95.0	31.8	106.6	77.2	68	68	-
WFS 6005-38	315	1.1/2"	38	28	32	79.4	113.0	36.5	123.5	95.0	76	76	17.0



**EMC Engineering Maintenance Center**

Valvol reduktuese presioni



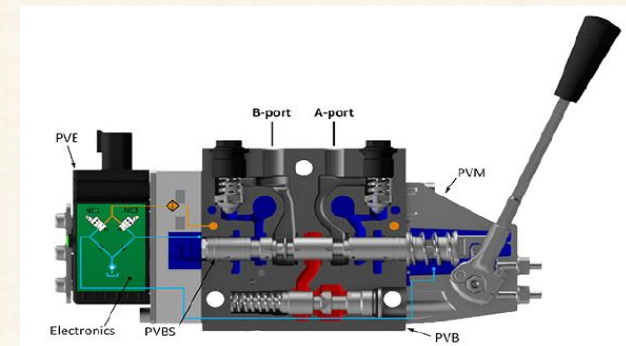
**EMC Engineering Maintenance Center**

Grupet e valvolave Danfoss gjenden ne shume lloj makinerishe me sisteme hidraulike.

Eshte shume e rëndesishme te kuptohet menyra e funksionimit te komponentit hidraulik pasi vetem atehere ju mund te jeni ne gjendje te kuptoni llojin e defektit qe mund te kete komponenti.

Gjate procesit te identifikimit te shkakut te defektit hidraulik, eshte e rëndesishme te kuptohet nese kemi te bejme me nje problem hidraulik apo me nje problem elektrik.

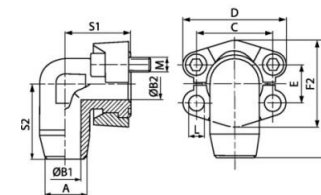
Tashme hidraulika eshte e lidhur shume ngushte me elektroniken.



**FLLANXHE SAE me kënd 90°, për t'u salduar (për tuba metalik me përmasë METRIKE)..... WFS M (3000/6000 PSI)**

<b>Cilësitë</b>	
<b>Standarti</b>	SAE J518C dhe ISO 6162
<b>Forma</b>	Me kënd 90°
<b>Dizenjo</b>	Fllanxhë SAE për t'u salduar me tub metalik
<b>Furnizohet së bashku me</b>	2 gjysmë-fllanxha, set-in e bulonave dhe guarnicionin O-Ring
<b>Materiali</b>	Çelik S355J2G3 (ST52,3)
<b>Sipërfaqja</b>	E zezë e vajosur
<b>Shënim</b>	

**SAE**



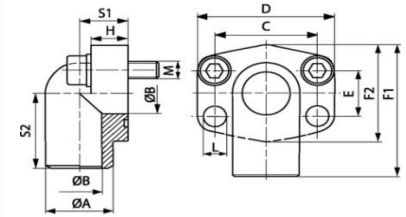
Presioni maksimal i treguar i referohet fllanxhës. Presioni i punës përcaktohet nga tubi metalik (spesori i tubit) dhe nga cilësia e tubit.

Kodi	Seria e Presionit	Presioni maksimal (Bar)	Size	A (mm)	B1 (mm)	B2 (mm)	C (mm)	D (mm)	E (mm)	F1 (mm)	F2 (mm)	S1 (mm)	S2 (mm)	L (mm)	Bulonat
WFS 3001-15 M	3000 PSI	350	1/2"	15	11	11	38.1	54.0	17.5	60.8	45.6	39	38	8.7	(4x)M8x25
WFS 3001-16 M	3000 PSI	350	1/2"	16	10	10	38.1	54.0	17.5	60.8	45.6	39	38	8.7	(4x)M8x25
WFS 3002-18 M	3000 PSI	350	3/4"	18	15	19	47.6	64.9	22.2	70.9	51.8	42	45	10.7	(4x)M10x30
WFS 3002-20 M	3000 PSI	350	3/4"	20	14	17	47.6	64.9	22.2	70.9	51.8	42	45	10.7	(4x)M10x30
WFS 3002-22 M	3000 PSI	350	3/4"	22	18	19	47.6	64.9	22.2	70.9	51.8	42	45	10.7	(4x)M10x30
WFS 3002-25 M	3000 PSI	350	3/4"	25	17	17	47.6	64.3	22.2	70.9	51.8	42	45	10.7	(4x)M10x30
WFS 3003-25 M	3000 PSI	315	1"	25	19	21	52.4	69.9	26.2	79.2	58.4	45	50	10.7	(4x)M10x30
WFS 3003-28 M	3000 PSI	315	1"	28	24	25	52.4	69.9	26.2	79.2	58.4	45	50	10.7	(4x)M10x30
WFS 3003-30 M	3000 PSI	315	1"	30	21	21	52.4	69.9	26.2	79.2	58.4	45	50	10.7	(4x)M10x30
WFS 3004-25 M	3000 PSI	250	1.1/4"	25	19	27	58.7	79.4	30.2	85.3	72.6	50	59	-	*2
WFS 3004-30 M	3000 PSI	250	1.1/4"	30	22	27	58.7	79.4	30.2	85.3	72.6	50	59	-	*2
WFS 3004-35 M	3000 PSI	250	1.1/4"	35	31	32	58.7	79.4	30.2	85.3	72.6	50	59	-	*2
WFS 3004-38 M	3000 PSI	250	1.1/4"	38	28	27	56.7	79.4	30.2	85.3	72.6	50	59	-	*2
WFS 3005-38 M	3000 PSI	200	1.1/2"	38	30	32	69.9	93.8	35.7	117.1	82.2	76	76	13.5	(4x)M12x35
WFS 3005-42 M	3000 PSI	200	1.1/2"	42	36	36	69.9	93.8	35.7	117.1	82.2	76	76	13.5	(4x)M12x35
WFS 6001-16 M	6000 PSI	400	1/2"	16	10	10	40.5	56.0	18.2	61.6	47.2	39	38	8.7	(3x)M8x30
WFS 6002-16 M	6000 PSI	400	3/4"	16	10	17	50.8	71.0	23.8	78.0	60.0	48	48	10.7	(4x)M10x35
WFS 6002-20 M	6000 PSI	400	3/4"	20	12	17	50.8	71.0	23.8	78.0	60.0	48	48	10.7	(4x)M10x35
WFS 6002-25 M	6000 PSI	400	3/4"	25	15	17	50.8	71.0	23.8	78.0	60.0	48	48	10.7	(4x)M10x35
WFS 6003-25 M	6000 PSI	400	1"	25	15	20	57.2	81.0	27.8	94.0	69.6	60	60	-	(4x)M12x45
WFS 6003-30 M	6000 PSI	400	1"	30	22	25	57.2	81.0	27.8	94.0	69.6	60	60	-	(4x)M12x45
WFS 6004-30 M	6000 PSI	315	1.1/4"	30	22	27	66.7	95.0	31.8	106.6	77.2	68	68	-	(4x)M14x50
WFS 6004-38 M	6000 PSI	315	1.1/4"	38	28	30	66.7	95.0	31.8	106.6	77.2	68	68	-	(4x)M14x50
WFS 6005-38 M	6000 PSI	315	1.1/2"	38	28	32	79.4	113.0	36.5	123.5	95.0	76	76	17.0	(4x)M16x55

**FLLANXHE SAE me kënd 90°, për t'u salduar (për tuba metalik me përmasë BSP)..... AFS 90 ST ( 3000 PSI)**

<b>Cilësitë</b>	
<b>Seria e presionit</b>	3000 PSI (210 Bar)
<b>Standarti</b>	SAE J518C dhe ISO 6162
<b>Forma</b>	Me kënd 90°
<b>Dizenjo</b>	Fllanxhë SAE për t'u salduar me tub metalik me përmasë BSP
<b>Montimi</b>	Me vrima për montim me bulona me fileta METRIKE
<b>Furnizohet</b>	Vetëm fllanxha
<b>Materiali</b>	Çelik S355J2G3 (ST52,3)
<b>Sipërfaqja</b>	E zezë e vajosur
<b>Shënim</b>	

**SAE**



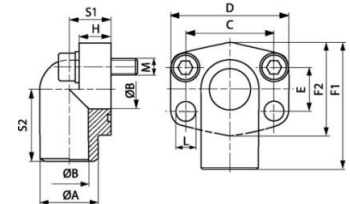
Presioni maksimal i treguar i referohet fllanxhës. Presioni i punës përcaktohet nga tubi metalik (spesori i tubit) dhe nga cilësia e tubit.

Kodi	Presioni maksimal (Bar)	Size	ØA (mm)	ØB (mm)	C (mm)	D (mm)	E (mm)	F1 (mm)	F2 (mm)	H (mm)	S1 (mm)	S2 (mm)	L (mm)	M (Metr.)
AFS 200/90 ST	350	3/4"	27.0	19	47.6	70	22.2	63	50	21.0	23.0	41	11.0	M 10 x 40
AFS 202/90 ST	315	1"	34.5	23	52.4	75	26.2	72	60	24.0	25.0	48	11.0	M 10 x 45
AFS 204/90 ST	250	1.1/4"	43.0	31	58.7	86	30.2	82	68	25.0	27.0	54	11.5	M 10 x 45
AFS 206/90 ST	200	1.1/2"	50.0	35	69.9	97	35.7	92	78	29.0	31.5	57	14.0	M 12 x 50
AFS 208/90 ST	200	2"	65.0	48	77.8	100	42.9	99	90	50.0	37.5	63	14.0	M 12 x 70

**FLLANXHE SAE me kënd 90°, për t'u salduar (për tuba metalik me përmasë BSP)..... AFS 90 ST ( 6000 PSI)**

<b>Cilësitë</b>	
<b>Seria e presionit</b>	6000 PSI (420 Bar)
<b>Standarti</b>	SAE J518C dhe ISO 6162
<b>Forma</b>	Me kënd 90°
<b>Dizenjo</b>	Fllanxhë SAE për t'u salduar me tub metalik me përmasë BSP
<b>Montimi</b>	Me vrima për montim me bulona me fileta METRIKE
<b>Furnizohet</b>	Vetëm fllanxha
<b>Materiali</b>	Çelik S355J2G3 (ST52,3)
<b>Sipërfaqja</b>	E zezë e vajosur
<b>Shënim</b>	

**SAE**



Presioni maksimal i treguar i referohet fllanxhës. Presioni i punës përcaktohet nga tubi metalik (spesori i tubit) dhe nga cilësia e tubit.

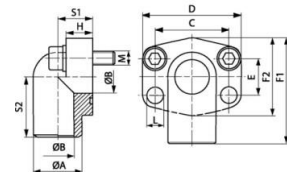
Kodi	Presioni maksimal (Bar)	Size	ØA (mm)	ØB (mm)	C (mm)	D (mm)	E (mm)	F1 (mm)	F2 (mm)	H (mm)	S1 (mm)	S2 (mm)	L (mm)	M (Metr.)
AFS 700/90 ST	400	3/4"	28.0	19	50.8	71	23.8	70	60	19.0	22.0	40	11.0	M 10 x 35
AFS 702/90 ST	400	1"	35.0	25	57.2	81	27.8	82	70	24.0	27.0	47	13.0	M 10 x 45
AFS 704/90 ST	375	1.1/4"	42.0	32	66.7	95	31.8	95	78	27.0	32.0	56	15.0	M 14 x 50
AFS 706/90 ST	320	1.1/2"	48.0	38	79.4	113	36.5	115	94	30.0	40.0	68	17.0	M 16 x 60



**FLLANXHE SAE me kënd 90°, për t'u salduar (për tuba metalik me përmasë BSP)..... AFS 90 ST M ( 3000/6000 PSI)**

<b>Cilësitë</b>	
<b>Standarti</b>	SAE J518C dhe ISO 6162
<b>Forma</b>	Me kënd 90°
<b>Dizenjo</b>	Fllanxhë SAE për t'u salduar me tub metalik me përmasë BSP
<b>Montimi</b>	Me vrima për montim me bulona me fileta METRIKE
<b>Furnizohet së bashku me</b>	Set-in e bulonave METRIK dhe guarnicionin O-Ring
<b>Materiali</b>	Çelik S355J2G3 (ST52,3)
<b>Sipërfaqja</b>	E zezë e vajosur

**SAE**



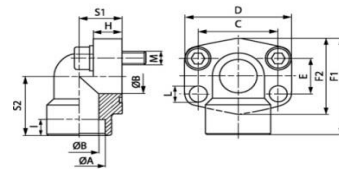
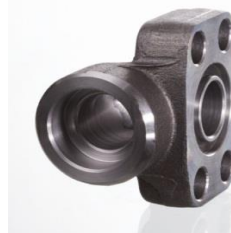
Kodi	Seria	P.max. (Bar)	Size	ØA (mm)	ØB (mm)	C (mm)	D (mm)	E (mm)	F1(mm)	F2 (mm)	H (mm)	S1 (mm)	S2 (mm)	L (mm)	Bulonat
AFS 200/90 ST M	3000 PSI	350	3/4"	27.0	19	47.6	70	22.2	63	50	21.0	23.0	41	11.0	(4x)M10x40
AFS 202/90 ST M	3000 PSI	315	1"	34.5	23	52.4	75	26.2	72	60	24.0	25.0	48	11.0	(4x)M10x45
AFS 204/90 ST M	3000 PSI	250	1.1/4"	43.0	31	58.7	86	30.2	82	68	25.0	27.0	54	11.5	(4x)M10x45
AFS 206/90 ST M	3000 PSI	200	1.1/2"	50.0	35	69.9	97	35.7	92	78	29.0	31.5	57	14.0	(4x)M12x50
AFS 208/90 ST M	3000 PSI	200	2"	65.0	48	77.8	100	42.9	99	90	50.0	37.5	63	14.0	(4x)M12x70
AFS 700/90 ST M	6000 PSI	400	3/4"	28.0	19	50.8	71	23.8	70	60	19.0	22.0	40	11.0	(4x)M10x35
AFS 702/90 ST M	6000 PSI	400	1"	35.0	25	57.2	81	27.8	82	70	24.0	27.0	47	13.0	(4x)M10x45
AFS 704/90 ST M	6000 PSI	375	1.1/4"	42.0	32	66.7	95	31.8	95	78	27.0	32.0	56	15.0	(4x)M14x50
AFS 706/90 ST M	6000 PSI	320	1.1/2"	48.0	38	79.4	113	36.5	115	94	30.0	40.0	68	17.0	(4x)M16x50

**HANSA FLEX**

**FLLANXHE SAE me kënd 90°, për t'u salduar..... AFS 90 S ( 3000 PSI)**

<b>Cilësitë</b>	
<b>Seria e presionit</b>	3000 PSI (210 Bar)
<b>Standarti</b>	SAE J518C dhe ISO 6162
<b>Forma</b>	Me kënd 90°
<b>Dizenjo</b>	Fllanxhë SAE për t'u salduar me tub metalik
<b>Montimi</b>	Me vrima për montim me bulona me fileta METRIKE
<b>Furnizohet</b>	Vetëm fllanxha
<b>Materiali</b>	Çelik S355J2G3 (ST52,3)
<b>Sipërfaqja</b>	E zezë e vajosur

**SAE**



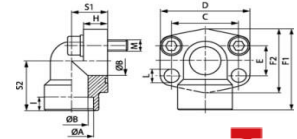
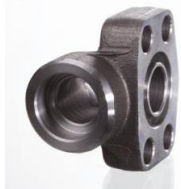
Kodi	Presioni max. (Bar)	Size	ØA (mm)	ØB (mm)	C (mm)	E (mm)	F1(mm)	I (mm)	S1 (mm)	S2(mm)	L (mm)	M (Metr.)	M (Unc)
AFS 80/90 S	350	1/2"	21.6	13	38.1	17.5	60	10	20	37	9.0	M 8 x 30	5/16" x 1.1/4"
AFS 80/90 S 038	350	1/2"	17.5	13	38.1	17.5	60	10	20	37	9.0	M 8 x 30	5/16" x 1.1/4"
AFS 100/90 S	350	3/4"	27.2	19	47.6	22.2	63	10	24	38	11.0	M 10 x 35	3/8" x 1.1/2"
AFS 102/90 S	315	1"	34	25	52.4	26.2	70	12	28	43	11.0	M 10 x 35	3/8" x 1.1/2"
AFS 104/90 S	250	1.1/4"	42.8	32	58.7	30.2	85	14	34	51	11.5	M 10 x 40	7/16" x 1.1/2"
AFS 106/90 S	200	1.1/2"	48.6	38	69.9	35.7	95	16	38	56	13.5	M 12 x 45	1/2" x 1.3/4"
AFS 108/90 S	200	2"	61.0	51	77.8	42.9	110	18	42	65	13.5	M 12 x 45	5/8" x 2"

**HANSA FLEX**

FLLANXHE SAE me kënd 90°, për t'u salduar..... AFS 90 S ( 6000 PSI)

<b>Cilësitë</b>	
<b>Seria e presionit/ Standarti</b>	6000 PSI (420 Bar)/ SAE J518C dhe ISO 6162
<b>Dizenjo</b>	Fllanxhë SAE për t'u salduar me tub metalik, me kënd 90°
<b>Montimi</b>	Me vrima për montim me bulona me fileta METRIKE
<b>Furnizohet</b>	Vetëm fllanxha
<b>Materiali</b>	Çelik S355J2G3 (ST52,3), me sipërfaqe të zezë të vajosur

**SAE**



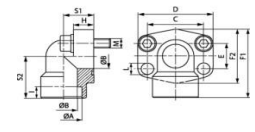
Kodi	Presioni max. (Bar)	Size	ØA (mm)	ØB(mm)	C (mm)	E(mm)	F1(mm)	I(mm)	S1 (mm)	S2(mm)	L (mm)	M (Metr.)	M (Unc)
AFS 401/90 S	400	1/2"	21.6	13	40.5	18.2	60	10	20	37	9.0	M 8 x 30	5/16" x 1.1/4"
AFS 401/90 S 038	400	1/2"	17.5	13	40.5	18.2	60	10	20	37	9.0	M 8 x 30	5/16" x 1.1/4"
AFS 402/90 S	400	3/4"	27.2	19	50.8	23.8	70	12	28	43	11.0	M 10 x 35	3/8" x 1.1/2"
AFS 403/90 S	400	1"	35.0	25	57.2	27.8	85	14	34	51	13.0	M 12 x 45	7/16" x 1.3/4"
AFS 404/90 S	400	1.1/4"	42.8	32	66.7	31.8	95	16	38	56	-	M 14 x 50	1/2" x 1.3/4"
AFS 405/90 S	400	1.1/2"	48.6	38	79.4	36.5	110	18	42	65	17.5	M 16 x 50	5/8" x 2"
AFS 406/90 S	400	2"	61.0	51	96.8	44.5	150	18	60	92	21.0	M 20 x 110	-

**HANSA FLEX**

FLLANXHE SAE me kënd 90°, për t'u salduar..... AFS 90 S M (3000/6000 PSI)

<b>Cilësitë</b>	
<b>Standarti</b>	SAE J518C dhe ISO 6162
<b>Dizenjo</b>	Fllanxhë SAE për t'u salduar me tub metalik, me kënd 90°
<b>Montimi</b>	Me vrima për montim me bulona me fileta METRIKE
<b>Furnizohet së bashku me</b>	Set-in e bulonave me fileta METRIKE dhe garnicionin O-Ring
<b>Materiali</b>	Çelik S355J2G3 (ST52,3), me sipërfaqe të zezë të vajosur

**SAE**

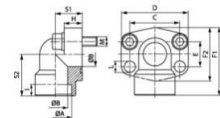


Kodi	Seria	P.Max.(Bar)	Size	ØA (mm)	ØB (mm)	C (mm)	D (mm)	E (mm)	F1(mm)	F2 (mm)	H (mm)	I (mm)	S1 (mm)	S2 (mm)	L (mm)	Bulonat
AFS 80/90 S M	3000 PSI	350	1/2"	21.6	13	38.1	54	17.5	60	48	16.0	10	20	37	9.0	M 8x30
AFS 80/90 S M 038	3000 PSI	350	1/2"	17.5	13	38.1	54	17.5	60	48	16.0	10	20	37	9.0	M 8x30
AFS 100/90 S M	3000 PSI	350	3/4"	27.2	19	47.6	65	22.2	63	50	18.0	10	24	38	11.0	M 10x35
AFS 102/90 S M	3000 PSI	315	1"	35.0	25	52.4	70	26.2	70	60	19.0	12	28	43	11.0	M 10x35
AFS 104/90 S M	3000 PSI	250	1.1/4"	42.8	32	58.7	79	30.2	85	68	21.0	14	34	51	11.5	M 10x40
AFS 106/90 S M	3000 PSI	200	1.1/2"	48.6	38	69.9	93	35.7	95	78	25.0	16	38	56	13.5	M 12x45
AFS 108/90 S M	3000 PSI	200	2"	61.0	51	77.8	110	42.9	110	90	25.0	18	42	65	13.5	M 12x45
AFS 401/90 S M	6000 PSI	400	1/2"	21.6	13	40.5	54	18.2	60	48	16.0	10	20	37	9.0	M 8x30
AFS401/90SM038	6000 PSI	400	1/2"	17.5	13	40.5	54	18.2	60	48	16.0	10	20	37	9.0	M 8x30
AFS 402/90 S M	6000 PSI	400	3/4"	27.2	19	50.8	70	23.8	70	60	19.0	12	28	43	11.0	M 10x35
AFS 403/90 S M	6000 PSI	400	1"	35.0	25	57.2	79	27.8	85	70	21.0	14	34	51	13.0	M 12x45
AFS 404/90 S M	6000 PSI	400	1.1/4"	42.8	32	66.7	93	31.8	95	78	25.0	16	38	56	15.0	M 14x50
AFS 405/90 S M	6000 PSI	400	1.1/2"	48.6	38	79.4	110	36.5	110	94	25.0	18	42	65	17.5	M 16x50
AFS 406/90 S M	6000 PSI	400	2"	61.0	51	96.8	134	44.5	150	106	76.5	18	60	92	21.0	M20x110

**FLLANXHE SAE me kënd 90°, për t'u salduar..... AFS 90 S U (3000/6000 PSI)**

<b>Cilësitë</b>	
<b>Standarti</b>	SAE J518C dhe ISO 6162
<b>Dizenjo</b>	Fllanxhë SAE për t'u salduar me tub metalik, me kënd 90°
<b>Montimi</b>	Me vrima për montim me bulona
<b>Furnizohet së bashku me</b>	Set-in e bulonave me fileta UNC dhe guarnicionin O-Ring
<b>Materiali</b>	Çelik S355J2G3 (ST52,3) me sipërfaqe të zezë të vajosur

**SAE**

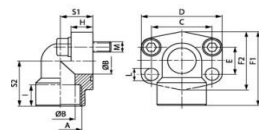


Kodi	Seria	P. max.(Bar)	Size	ØA (mm)	ØB (mm)	C (mm)	D (mm)	E (mm)	F1(mm)	F2 (mm)	H (mm)	I (mm)	S1 (mm)	S2 (mm)	L (mm)	Bulonat
AFS 80/90 S U	3000 PSI	350	1/2"	21.6	13	38.1	54	17.5	60	48	16	10	20	37	9.0	5/16"x1.1/4"
AFS 80/90 S U 038	3000 PSI	350	1/2"	17.5	13	38.1	54	17.5	60	48	16	10	20	37	9.0	5/16"x1.1/4"
AFS 100/90 S U	3000 PSI	350	3/4"	27.2	19	47.6	65	22.2	63	50	18	10	24	38	11.0	3/8"x1.1/2"
AFS 102/90 S U	3000 PSI	315	1"	35.0	25	52.4	70	26.2	70	60	19	12	28	43	11.0	3/8"x1.1/2"
AFS 104/90 S U	3000 PSI	250	1.1/4"	42.8	32	58.7	79	30.2	85	68	21	14	34	51	11.5	7/16"x1.1/2"
AFS 106/90 S U	3000 PSI	200	1.1/2"	48.6	38	69.9	93	35.7	95	78	25	16	38	56	13.5	1/2"x1.3/4"
AFS 108/90 S U	3000 PSI	200	2"	61.0	51	77.8	110	42.9	110	90	25	18	42	65	13.5	5/8" x 2"
AFS 401/90 S U	6000 PSI	400	1/2"	21.6	13	40.5	54	18.2	60	48	16	10	20	37	9.0	5/16"x1.1/4"
AFS401/90SU038	6000 PSI	400	1/2"	17.5	13	40.5	54	18.2	60	48	16	10	20	37	9.0	5/16"x1.1/4"
AFS 402/90 S U	6000 PSI	400	3/4"	27.2	19	50.8	70	23.8	70	60	19	12	28	43	11.0	3/8"x1.1/2"
AFS 403/90 S U	6000 PSI	400	1"	35.0	25	57.2	79	27.8	85	70	21	14	34	51	13.0	7/16"x1.3/4"
AFS 404/90 S U	6000 PSI	400	1.1/4"	42.8	32	66.7	93	31.8	95	78	25	16	38	56	13.5	1/2"x1.3/4"
AFS 405/90 S U	6000 PSI	400	1.1/2"	48.6	38	79.4	110	36.5	110	94	25	18	42	65	17.5	5/8" x 2"

**FLLANXHE SAE me kënd 90°, me fileta të brendshme BSP..... AFS 90 G (3000 PSI)**

<b>Cilësitë</b>	
<b>Seria e presionit</b>	3000 PSI (210 Bar)
<b>Standarti</b>	SAE J518C dhe ISO 6162
<b>Dizenjo</b>	Fllanxhë SAE me fileta të brendshme BSP, me kënd 90°
<b>Montimi</b>	Me vrima për montim me bulona
<b>Furnizohet</b>	Vetëm fllanxha
<b>Materiali</b>	Çelik S355J2G3 (ST52,3), me sipërfaqe të zezë të vajosur

**SAE**

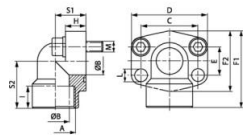


Kodi	Presioni max. (Bar)	Size	A	ØB(mm)	C (mm)	E(mm)	F1(mm)	H (mm)	I (mm)	S1(mm)	S2 (mm)	L (mm)	M (Metr.)	M (Unc)	F2 (mm)
AFS 80/90 G	350	1/2"	G 1/2" -14	13	38.1	17.5	60	16	19	20	37	9.0	M 8 x 30	5/16" x 1.1/4"	-
AFS 80/90 G 038	350	1/2"	G 3/8" -19	13	38.1	17.5	60	16	19	20	37	9.0	M 8 x 30	5/16" x 1.1/4"	48
AFS 100/90 G	350	3/4"	G 3/4" -14	19	47.6	22.2	63	18	19	24	38	11.0	M 10 x 35	3/8" x 1.1/2"	-
AFS 102/90 G	315	1"	G 1" -11	25	52.4	26.2	70	19	20	28	43	11.0	M 10 x 35	3/8" x 1.1/2"	-
AFS 104/90 G	250	1.1/4"	G 1.1/4" -11	32	58.7	30.2	85	21	22	34	51	11.5	M 10 x 40	7/16" x 1.1/2"	-
AFS 106/90 G	200	1.1/2"	G 1.1/2" -11	38	69.9	35.7	95	25	25	38	56	13.5	M 12 x 45	1/2" x 1.3/4"	-
AFS 108/90 G	200	2"	G 2" -11	51	77.8	42.9	110	25	28	42	65	13.5	M 12 x 45	5/8" x 2"	-

**FLLANXHE SAE me kënd 90°, me fileta të brendshme BSP..... AFS 90 G (6000 PSI)**

<b>Cilësitë</b>	
<b>Seria e presionit</b>	6000 PSI (420 Bar)
<b>Standarti</b>	SAE J518C dhe ISO 6162
<b>Dizenjo</b>	Fllanxhë SAE me fileta të brendshme BSP, me kënd 90°
<b>Montimi</b>	Me vrima për montim me bulona
<b>Furnizohet</b>	Vetëm fllanxha
<b>Materiali</b>	Çelik S355J2G3 (ST52,3), me sipërfaqe të zezë të vajosur

**SAE**

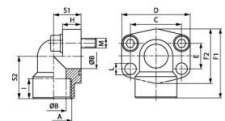


Kodi	Presioni max.I (Bar)	Size	A	ØB(mm)	C (mm)	E (mm)	F1(mm)	F2(mm)	H (mm)	I (mm)	S1 (mm)	S2 (mm)	L (mm)	M (Metr.)	M (Unc)
AFS 401/90 G 012	400	1/2"	G 1/2" -14	13	40.5	18.2	60	46	16	19	20	37	9.0	M 8 x 30	5/16"x1.1/4"
AFS 401/90 G 038	400	1/2"	G 3/8" -19	13	40.5	18.2	60	46	16	19	20	37	9.0	M 8 x 30	5/16"x1.1/4"
AFS 402/90 G	400	3/4"	G 3/4" -14	19	50.8	23.8	70	56	19	20	28	43	11.0	M 10 x 35	3/8"x1.1/2"
AFS 403/90 G	400	1"	G 1" -11	25	57.2	27.8	85	72	21	22	34	51	13.0	M 12 x 45	7/16"x1.3/4"
AFS 404/90 G	400	1.1/4"	G 1.1/4" -11	32	66.7	31.8	95	75	25	25	38	56	-	M 14 x 50	1/2"x1.3/4"
AFS 405/90 G	400	1.1/2"	G 1.1/2" -11	38	79.4	36.5	110	94	25	28	42	65	17.0	M 16 x 50	5/8" x 2"
AFS 406/90 G	400	2"	G 2" -11	51	96.8	44.5	132	107	35	33	45	75	21.0	M 20 x 70	-

**FLLANXHE SAE me kënd 90°, me fileta të brendshme BSP..... AFS 90 G M (3000/6000 PSI)**

<b>Cilësitë</b>	
<b>Standarti</b>	SAE J518C dhe ISO 6162
<b>Dizenjo</b>	Fllanxhë SAE me fileta të brendshme BSP, me kënd 90°
<b>Montimi</b>	Me vrima për montim me bulona
<b>Furnizohet së bashku me</b>	Set-in e bulonave me fileta METRIKE dhe guarnicionin O-Ring
<b>Materiali</b>	Çelik S355J2G3 (ST52,3), me sipërfaqe të zezë të vajosur

**SAE**

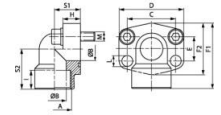


Kodi	Seria	P.max.(Bar)	Size	A	ØB(mm)	C (mm)	D (mm)	E (mm)	(mm)	F2(mm)	(mm)	I (mm)	S1 (mm)	S2 (mm)	L (mm)	Bulonat
AFS 80/90 G M	3000 PSI	350	1/2"	G 1/2" -14	13	38.1	54	17.5	60	48	16.0	19	20	37	9.0	(4x)M8x30
AFS 80/90 G M038	3000 PSI	350	1/2"	G 3/8" -19	13	38.1	54	17.5	60	48	16.0	19	20	37	9.0	(4x)M8x30
AFS 100/90 G M	3000 PSI	350	3/4"	G 3/4" -14	19	47.6	65	22.2	63	52	18.0	19	24	38	11.0	(4x)M10x35
AFS 102/90 G M	3000 PSI	315	1"	G 1" -11	25	52.4	70	26.2	70	60	19.0	20	28	43	11.0	(4x)M10x35
AFS 104/90 G M	3000 PSI	250	1.1/4"	G 1.1/4" -11	32	58.7	79	30.2	85	73	21.0	22	34	51	11.5	(4x)M10x40
AFS 106/90 G M	3000 PSI	200	1.1/2"	G 1.1/2" -11	38	69.9	93	35.7	95	83	25.0	25	38	56	13.5	(4x)M12x45
AFS 108/90 G M	3000 PSI	200	2"	G 2" -11	51	77.8	110	42.9	110	94	25.0	28	42	65	13.5	(4x)M12x45
AFS401/90GM012	6000 PSI	400	1/2"	G 1/2" -14	13	40.5	54	18.2	60	46	16.0	19	20	37	9.0	(4x)M8x30
AFS401/90GM038	6000 PSI	400	1/2"	G 3/8" -19	13	40.5	54	18.2	60	46	16.0	19	20	37	9.0	(4x)M8x30
AFS 402/90 G M	6000 PSI	400	3/4"	G 3/4" -14	19	50.8	70	23.8	70	56	19.0	20	28	43	11.0	(4x)M10x35
AFS 403/90 G M	6000 PSI	400	1"	G 1" -11	25	57.2	79	27.8	85	72	21.0	22	34	51	13.0	(4x)M12x45
AFS 404/90 G M	6000 PSI	400	1.1/4"	G 1.1/4" -11	32	66.7	93	31.8	95	75	25.0	25	38	56	15.0	(4x)M14x50
AFS 405/90 G M	6000 PSI	400	1.1/2"	G 1.1/2" -11	38	79.4	110	36.5	110	94	25.0	28	42	65	17.0	(4x)M16x50
AFS 406/90 G M	6000 PSI	400	2"	G 2" -11	51	96.8	134	44.5	150	106	35	28	45	75	21.0	(4x)M20x110

**FLLANXHE SAE me kënd 90°, me fileta të brendshme BSP..... AFS 90 G U (3000/6000 PSI)**

<b>Cilësitë</b>	
<b>Standarti</b>	SAE J518C dhe ISO 6162
<b>Dizenjo</b>	Fllanxhë SAE me fileta të brendshme BSP, me kënd 90°
<b>Montimi</b>	Me vrima për montim me bulona
<b>Furnizohet së bashku me</b>	Set-in e bulonave me fileta UNC dhe guarnicionin O-Ring
<b>Materiali</b>	Çelik S355J2G3 (ST52,3), me sipërfaqe të zezë të vajosur

**SAE**

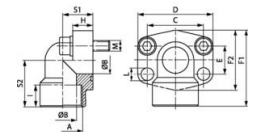


Kodi	Seria	P.max. (Bar)	Size	A	ØB (mm)	C (mm)	D (mm)	E (mm)	F1 mm	F2 (mm)	H (mm)	I (mm)	S1 (mm)	S2 (mm)	L (mm)	Bulonat UNC
AFS 80/90 G U	3000 PSI	350	1/2"	G 1/2" -14	13	38.1	54	17.5	60	48	16	19	20	37	9.0	(4 x) UNC 5/16 x 1.1/4
AFS 80/90 G U 038	3000 PSI	350	1/2"	G 3/8" -19	13	38.1	54	17.5	60	48	16	19	20	37	9.0	(4 x) UNC 5/16 x 1.1/4
AFS 100/90 G U	3000 PSI	350	3/4"	G 3/4" -14	19	47.6	65	22.2	63	52	18	19	24	38	11.0	(4 x) UNC 3/8 x 1.1/2
AFS 102/90 G U	3000 PSI	315	1"	G 1" -11	25	52.4	70	26.2	70	60	19	20	28	43	11.0	(4 x) UNC 3/8 x 1.1/2
AFS 104/90 G U	3000 PSI	250	1.1/4"	G 1.1/4" -11	32	58.7	79	30.2	85	73	21	22	34	51	11.5	(4 x) UNC 7/16 x 1.1/2
AFS 106/90 G U	3000 PSI	200	1.1/2"	G 1.1/2" -11	38	69.9	93	35.7	95	83	25	25	38	56	13.5	(4 x) UNC 1/2 x 1.3/4
AFS 108/90 G U	3000 PSI	200	2"	G 2" -11	51	77.8	110	42.9	110	94	25	28	42	65	13.5	(4 x) UNC 1/2 x 1.3/4
AFS 401/90 G U 012	6000 PSI	400	1/2"	G 1/2" -14	13	40.5	54	18.2	60	46	16	19	20	37	9.0	(4 x) UNC 5/16 x 1.1/4
AFS 401/90 G U 038	6000 PSI	400	1/2"	G 3/8" -19	13	40.5	54	18.2	60	46	16	19	20	37	9.0	(4 x) UNC 5/16 x 1.1/4
AFS 402/90 G U	6000 PSI	400	3/4"	G 3/4" -14	19	50.8	70	23.8	70	56	19	20	28	43	11.0	(4 x) UNC 3/8 x 1.1/2
AFS 403/90 G U	6000 PSI	400	1"	G 1" -11	25	57.2	79	27.8	85	72	21	22	34	51	13.0	(4 x) UNC 7/16 x 1.1/2
AFS 404/90 G U	6000 PSI	400	1.1/4"	G 1.1/4" -11	32	66.7	93	31.8	95	75	25	25	38	56	13.5	(4 x) UNC 1/2 x 1.3/4
AFS 405/90 G U	6000 PSI	400	1.1/2"	G 1.1/2" -11	38	79.4	110	36.5	110	94	25	28	42	65	17.0	(4 x) UNC 5/8 x 2

**FLLANXHE SAE me kënd 90°, me fileta të brendshme NPT..... AFS 90 N (3000 PSI)**

<b>Cilësitë</b>	
<b>Seria e presionit</b>	3000 PSI (210 Bar)
<b>Standarti</b>	SAE J518C dhe ISO 6162
<b>Dizenjo</b>	Fllanxhë SAE me fileta të brendshme NPT, me kënd 90°
<b>Montimi</b>	Me vrima për montim me bulona
<b>Furnizohet</b>	Vetëm fllanxha
<b>Materiali</b>	Çelik S355J2G3 (ST52,3), me sipërfaqe të zezë të vajosur

**SAE**

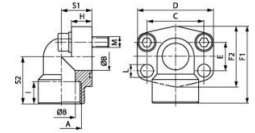


Kodi	Presioni max.(Bar)	Size	A	ØB(mm)	C (mm)	E (mm)	F1 mm	H (mm)	I (mm)	S1 mm	S2 (mm)	L (mm)	M (Metr.)	M (Unc)
AFS 80/90 N	350	1/2"	NPT 1/2"	13	38.1	17.5	60	16	19	20	37	9.0	M 8 x 30	5/16" x 1.1/4"
AFS 80/90 N 038	350	1/2"	NPT 3/8" -18	13	38.1	17.5	60	16	19	20	37	9.0	M 8 x 30	5/16" x 1.1/4"
AFS 100/90 N	350	3/4"	NPT 3/4" -14	19	47.6	22.2	63	18	19	24	38	11.0	M 10 x 35	3/8" x 1.1/2"
AFS 102/90 N	315	1"	NPT 1"	25	52.4	26.2	70	19	20	28	43	11.0	M 10 x 35	5/16" x 1.1/4"
AFS 104/90 N	250	1.1/4"	M 6 x 1 K	32	58.7	30.2	85	21	22	34	51	11.5	M 10 x 40	7/16" x 1.1/2"
AFS 106/90 N	200	1.1/2"	NPT 1.1/2"	38	69.9	35.7	95	25	25	38	56	13.5	M 12 x 45	1/2" x 1.3/4"
AFS 108/90 N	200	2"	NPT 2" -11.5	51	77.8	42.9	110	25	28	42	65	13.5	M 12 x 45	5/8" x 2"

**FLLANXHE SAE me kënd 90°, me fileta të brendshme NPT..... AFS 90 N (6000 PSI)**

<b>Cilësitë</b>	
<b>Seria e presionit</b>	6000 PSI (420 Bar)
<b>Standarti</b>	SAE J518C dhe ISO 6162
<b>Dizenjo</b>	Fllanxhë SAE me fileta të brendshme NPT, me kënd 90°
<b>Montimi</b>	Me vrima për montim me bulona
<b>Furnizohet</b>	Vetëm fllanxha
<b>Materiali</b>	Çelik S355J2G3 (ST52,3), me sipërfaqe të zezë të vajosur

**SAE**

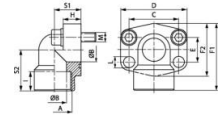


Kodi	Presioni max. (Bar)	Size	A	ØB(mm)	C (mm)	E (mm)	F1 mm	H (mm)	I (mm)	S1 mm	S2 (mm)	L (mm)	M (Metr.)	M (Unc)
AFS 401/90 N	400	1/2"	NPT 1/2"	13	40.5	18.2	60	16	19	20	37	9.0	M 8 x 30	5/16" x 1.1/4"
AFS 401/90 N 038	400	1/2"	NPT 3/8" -18	13	40.5	18.2	60	16	19	20	37	9.0	M 8 x 30	5/16" x 1.1/4"
AFS 402/90 N	400	3/4"	NPT 3/4" -14	19	50.8	23.8	70	19	20	28	43	11.0	M 10 x 35	3/8" x 1.1/2"
AFS 403/90 N	400	1"	NPT 1"	25	57.2	27.8	85	21	22	34	51	13.0	M 12 x 45	7/16" x 1.3/4"
AFS 404/90 N	400	1.1/4"	M 6 x 1 K	32	66.7	31.8	95	25	25	38	56	-	M 14 x 45	1/2" x 1.3/4"
AFS 405/90 N	400	1.1/2"	NPT 1.1/2"	38	79.4	36.5	110	25	28	42	65	17.0	M 16 x 50	5/8" x 2"

**FLLANXHE SAE me kënd 90°, me fileta të brendshme NPT..... AFS 90 N M (3000/6000 PSI)**

<b>Cilësitë</b>	
<b>Standarti</b>	SAE J518C dhe ISO 6162
<b>Dizenjo</b>	Fllanxhë SAE me fileta të brendshme BSP, me kënd 90°
<b>Montimi</b>	Me vrima për montim me bulona
<b>Furnizohet së bashku me</b>	Set-in e bulonave me fileta METRIK dhe garnicionin O-Ring
<b>Materiali</b>	Çelik S355J2G3 (ST52,3), me sipërfaqe të zezë të vajosur

**SAE**

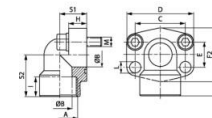


Kodi	Seria	P.max. (Bar)	Size	A	ØB (mm)	C (mm)	D (mm)	E (mm)	F1 (mm)	F2 (mm)	H (mm)	I (mm)	S1 (mm)	S2 (mm)	L (mm)	Bulonat
AFS 80/90 N M	3000 PSI	350	1/2"	NPT 1/2"	13	38.1	54	17.5	60	48	16	19	20	37	9.0	(4 x) M 8 x 30
AFS 80/90 N M 038	3000 PSI	350	1/2"	NPT 3/8" -18	13	38.1	54	17.5	60	48	16	19	20	37	9.0	(4 x) M 8 x 30
AFS 100/90 N M	3000 PSI	350	3/4"	NPT 3/4" -14	19	47.6	65	22.2	63	52	18	19	24	38	11.0	(4 x) M 10 x 35
AFS 102/90 N M	3000 PSI	315	1"	NPT 1"	25	52.4	70	26.2	70	60	19	20	28	43	11.0	(4 x) M 10 x 35
AFS 104/90 N M	3000 PSI	250	1.1/4"	M 6 x 1 K	32	58.7	79	30.2	85	73	21	22	34	51	11.5	(4 x) M 10 x 40
AFS 106/90 N M	3000 PSI	200	1.1/2"	NPT 1.1/2"	38	69.9	93	35.7	95	83	25	25	38	56	13.5	(4 x) M 12 x 45
AFS 108/90 N M	3000 PSI	200	2"	NPT 2" -11.5	51	77.8	110	42.9	110	94	25	28	42	65	13.5	(4 x) M 12 x 45
AFS 401/90 N M	6000 PSI	400	1/2"	NPT 1/2"	13	40.5	54	18.2	60	46	16	19	20	37	9.0	(4 x) M 8 x 30
AFS 401/90 N M038	6000 PSI	400	1/2"	NPT 3/8" -18	13	40.5	54	18.2	60	46	16	19	20	37	9.0	(4 x) M 8 x 30
AFS 402/90 N M	6000 PSI	400	3/4"	NPT 3/4" -14	19	50.8	70	23.8	70	55	19	20	28	43	11.0	(4 x) M 10 x 35
AFS 403/90 N M	6000 PSI	400	1"	NPT 1"	25	57.2	79	27.8	85	72	21	22	34	51	13.0	(4 x) M 12 x 45
AFS 404/90 N M	6000 PSI	400	1.1/4"	M 6 x 1 K	32	66.7	93	31.8	95	75	25	25	38	56	-	(4 x) M 14 x 45
AFS 405/90 N M	6000 PSI	400	1.1/2"	NPT 1.1/2"	38	79.4	110	36.5	110	94	25	28	42	65	17.0	(4 x) M 16 x 50

**FLLANXHE SAE me kënd 90°, me fileta të brendshme NPT..... AFS 90 N U (3000/6000 PSI)**

<b>Cilësitë</b>	
<b>Standarti</b>	SAE J518C dhe ISO 6162
<b>Dizenjo</b>	Fllanxhë SAE me fileta të brendshme BSP, me kënd 90°
<b>Montimi</b>	Me vrima për montim me bulona
<b>Furnizohet së bashku me</b>	Set-in e bulonave me fileta UNC dhe garnicionin O-Ring
<b>Materiali</b>	Çelik S355J2G3 (ST52,3), me sipërfaqe të zezë të vajosur

**SAE**

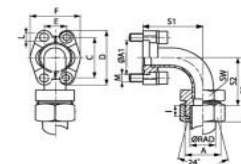


Kodi	Seria	P.max. (Bar)	Size	A	ØB(mm)	C (mm)	D (mm)	E (mm)	F1 mm	F2 (mm)	H (mm)	I (mm)	S1 (mm)	S2 (mm)	L (mm)	Bulonat
AFS 80/90 N U	3000 PSI	350	1/2"	NPT 1/2"	13	38.1	54	17.5	60	48	16	19	20	37	9.0	(4 x) UNC 5/16 x 1.1/4
AFS 80/90 N U 038	3000 PSI	350	1/2"	NPT 3/8" -18	13	38.1	54	17.5	60	48	16	19	20	37	9.0	(4 x) UNC 5/16 x 1.1/4
AFS 100/90 N U	3000 PSI	350	3/4"	NPT 3/4" -14	19	47.6	65	22.2	63	52	18	19	24	38	11.0	(4 x) UNC 3/8 x 1.1/2
AFS 102/90 N U	3000 PSI	315	1"	NPT 1"	25	52.4	70	26.2	70	60	19	20	28	43	11.0	(4 x) UNC 3/8 x 1.1/2
AFS 104/90 N U	3000 PSI	250	1.1/4"	M 6 x 1 K	32	58.7	79	30.2	85	73	21	22	34	51	11.5	(4 x) UNC 7/16 x 1.1/2
AFS 106/90 N U	3000 PSI	200	1.1/2"	NPT 1.1/2"	38	69.9	93	35.7	95	83	25	25	38	56	13.5	(4 x) UNC 1/2 x 1.3/4
AFS 108/90 N U	3000 PSI	200	2"	NPT 2" -11.5	51	77.8	110	42.9	110	94	25	28	42	65	13.5	(4 x) UNC 1/2 x 1.3/4
AFS 401/90 N U	6000 PSI	400	1/2"	NPT 1/2"	13	40.5	54	18.2	60	46	16	19	20	37	9.0	(4 x) UNC 5/16 x 1.1/4
AFS 401/90 N U 038	6000 PSI	400	1/2"	NPT 3/8" -18	13	40.5	54	18.2	60	46	16	19	20	37	9.0	(4 x) UNC 5/16 x 1.1/4
AFS 402/90 N U	6000 PSI	400	3/4"	NPT 3/4" -14	19	50.8	70	23.8	70	55	19	20	28	43	11.0	(4 x) UNC 3/8 x 1.1/2
AFS 403/90 N U	6000 PSI	400	1"	NPT 1"	25	57.2	79	27.8	85	72	21	22	34	51	13.0	(4 x) UNC 7/16 x 1.1/2
AFS 404/90 N U	6000 PSI	400	1.1/4"	M 6 x 1 K	32	66.7	93	31.8	95	75	25	25	38	56	-	(4 x) UNC 1/2 x 1.3/4
AFS 405/90 N U	6000 PSI	400	1.1/2"	NPT 1.1/2"	38	79.4	110	36.5	110	94	25	28	42	65	17.0	(4 x) UNC 5/8 x 2

**KOKE FLLANXHE SAE, ADAPTOR me kënd 90°..... SFCE90 (3000 PSI)**

<b>Cilësitë</b>	
<b>Seria e presionit</b>	3000 PSI (210 Bar)
<b>Standarti</b>	DIN 3901/3902
<b>Dizenjo</b>	Kokë fllanxhe adaptor, me kënd 90°
<b>Montimi</b>	Me vrima për montim me bulona
<b>Furnizohet</b>	Vetëm fllanxha
<b>Materiali</b>	Çelik S355J2G3 (C22), me sipërfaqe të zezë të vajosur

**SAE**



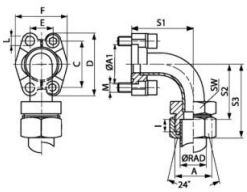
Kodi	Seria	ØRAD(mm)	P.max.(Bar)	Size	A	A1(mm)	SW	I(mm)	S1 (mm)	S2mm	S3 (mm)	L (mm)	M (Metr.)	M (Unc)
SFCE 3001-90 L15	L	15	315	1/2"	M 22x1.5	30.2	22	7.0	40	43.0	58	8.7	M 8 x 30	5/16" x 1.1/4"
SFCE 3001-90 S16	L	16	350	1/2"	M 24x1.5	30.2	24	7.5	40	42.5	60	8.7	M 8 x 30	5/16" x 1.1/4"
SFCE 3002-90 L22	L	22	160	3/4"	M 30 x 2	38.1	30	7.5	59	63.5	80	10.7	M 10 x 35	3/8" x 1.1/2"
SFCE 3003-90 L28	L	28	160	1"	M 36 x 2	44.4	36	7.5	68	75.5	80	10.7	M 10 x 35	3/8" x 1.1/2"
SFCE 3003-90 S25	L	25	315	1"	M 36 x 2	44.4	36	12.0	68	71.0	95	10.7	M 10 x 35	3/8" x 1.1/2"
SFCE 3003-90 S30	L	30	315	1"	M 42 x 2	44.4	46	13.5	68	69.5	96	10.7	M 10 x 35	3/8" x 1.1/2"
SFCE 3004-90 L35	L	35	160	1.1/4"	M 45 x 2	50.8	46	10.5	86	94.5	116	-	*2	7/16" x 1.1/2"
SFCE 3005-90 L42	L	42	160	1.1/2"	M 52 x 2	60.3	55	11.0	98	104.0	127	13.5	M 12 x 35	1/2" x 1.1/2"
SFCE 3005-90 S38	L	38	210	1.1/2"	M 52 x 2	60.3	55	16.0	98	99.0	130	13.5	M 12 x 35	1/2" x 1.1/2"

**HANSA/FLEX**

**KOKE FLLANXHE SAE, ADAPTOR me kënd 90° ..... SFCE90 (6000 PSI)**

<b>Cilësitë</b>	
<b>Seria e presionit</b>	6000 PSI (420 Bar)
<b>Standarti</b>	DIN 3901/3902
<b>Dizenjo</b>	Kokë fllanxhe adaptor, me kënd 90°
<b>Montimi</b>	Me vrima për montim me bulona
<b>Furnizohet</b>	Vetëm fllanxha
<b>Materiali</b>	Çelik S355J2G3 (C22), me sipërfaqe të zezë të vajosur

**SAE**

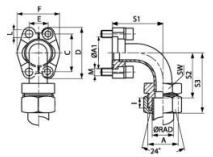


Kodi	Seria	ØRAD (mm)	P.max (Bar)	Size	A	A1 mm	SW	I (mm)	S1mm	S2 (mm)	S3mm	L (mm)	M (Metr.)	M (Unc)
SFCE 6002-90 S25	S	25	400	3/4"	M 36 x 2	41.3	36	12.0	62	59.0	83	10.7	M 10 x 35	3/8" x 1.1/2"
SFCE 6002-90 S30	S	30	400	3/4"	M 42 x 2	41.3	46	13.5	62	57.5	84	10.7	M 10 x 35	3/8" x 1.1/2"
SFCE 6003-90 S25	S	25	400	1"	M 36 x 2	47.6	36	12.0	74	73.0	97	-	M 12 x 45	7/16" x 1.3/4"
SFCE 6003-90 S30	S	30	400	1"	M 42 x 2	47.6	46	13.5	74	71.5	98	-	M 12 x 45	7/16" x 1.3/4"
SFCE 6004-90 S38	S	38	315	1.1/4"	M 52 x 2	54.0	55	16.0	96	91.0	122	-	M 14 x 50	1/2" x 1.3/4"
SFCE 6005-90 S38	S	38	315	1.1/2"	M 52 x 2	63.5	55	16.0	111	91.0	122	17.0	M 16 x 55	5/8" x 2"

**KOKE FLLANXHE SAE, ADAPTOR me kënd 90° ..... SFCE 90 M (3000/6000 PSI)**

<b>Cilësitë</b>	
<b>Standarti</b>	DIN 3901/3902
<b>Dizenjo</b>	Kokë fllanxhe adaptor, me kënd 90°
<b>Montimi</b>	Me vrima për montim me bulona
<b>Furnizohet së bashku me</b>	2 gjysmë-fllanxha, set-in e bulonave dhe guarnicionin O-Ring
<b>Materiali</b>	Çelik S355J2G3 (C22), me sipërfaqe të zezë të vajosur

**SAE**



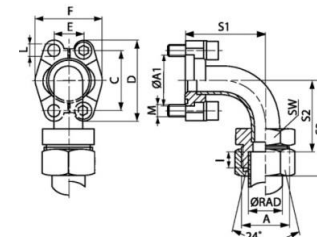
Kodi	Seria e Presionit	Seria	ØRAD (mm)	P.max. (Bar)	Size	A	A1(mm)	SW	C mm	D (mm)	E (mm)	F(mm)	I (mm)	S1 (mm)	S2 (mm)	S3 (mm)	L (mm)
SFCE 3001-90 L 15 M	3000 PSI	L	15	315	1/2"	M 22x1.5	30.2	22	38.1	54	17.5	45.6	7.0	40	43.0	58	8.7
SFCE 3002-90 L 22 M	3000 PSI	L	22	160	3/4"	M 30 x 2	38.1	30	47.6	65	22.2	51.8	7.5	59	63.5	80	10.7
SFCE 3003-90 L 28 M	3000 PSI	L	28	160	1"	M 36 x 2	44.4	36	52.4	70	26.2	58.4	7.5	68	75.5	80	10.7
SFCE 3004-90 L 35 M	3000 PSI	L	35	160	1.1/4"	M 45 x 2	50.8	46	58.7	79	30.2	72.6	10.5	86	94.5	116	-
SFCE 3005-90 L 42 M	3000 PSI	L	42	160	1.1/2"	M 52 x 2	60.3	55	69.9	94	35.7	82.6	11.0	98	104.0	127	13.5
SFCE 3001-90 S 16 M	3000 PSI	L S	16	350	1/2"	M24x1.5	30.2	24	38.1	54	17.5	45.6	7.5	40	42.5	60	8.7
SFCE 3003-90 S 25 M	3000 PSI	L S	25	315	1"	M 36 x 2	44.4	36	52.4	70	26.2	58.4	12.0	68	71.0	95	10.7
SFCE 3003-90 S 30 M	3000 PSI	L S	30	315	1"	M 42 x 2	44.4	46	52.4	70	26.2	58.4	13.5	68	69.5	96	10.7
SFCE 3005-90 S 38 M	3000 PSI	L S	38	210	1.1/2"	M 52 x 2	60.3	55	69.9	94	35.7	82.6	16.0	98	99.0	130	13.5
SFCE 6001-90 S 16 M	6000 PSI	S	16	400	1/2"	M 24x1.5	31.8	24	40.5	56	18.2	47.2	8.5	40	41.5	60	8.7
SFCE 6002-90 S 25 M	6000 PSI	S	25	400	3/4"	M 36 x 2	41.3	36	50.8	71	23.8	60.0	12.0	62	59.0	83	10.7
SFCE 6002-90 S 30 M	6000 PSI	S	30	400	3/4"	M 42 x 2	41.3	46	50.8	71	23.8	60.0	13.5	62	57.5	84	10.7
SFCE 6003-90 S 25 M	6000 PSI	S	25	400	1"	M 36 x 2	47.6	36	57.2	81	27.8	69.6	12.0	74	73.0	97	-
SFCE 6003-90 S 30 M	6000 PSI	S	30	400	1"	M 42 x 2	47.6	46	57.2	81	27.8	69.6	13.5	74	71.5	98	-
SFCE 6004-90 S 38 M	6000 PSI	S	38	315	1.1/4"	M 52 x 2	54.0	55	66.7	95	31.8	77.2	16.0	96	91.0	122	-
SFCE 6005-90 S 38 M	6000 PSI	S	38	315	1.1/2"	M 52 x 2	63.5	55	79.4	113	36.5	95.0	16.0	111	91.0	122	17.0



**KOKE FLLANXHE SAE, ADAPTOR me kënd 90° ..... SFCE 90 U (3000/6000 PSI)**

<b>Cilësitë</b>	
<b>Standarti</b>	DIN 3901/3902
<b>Forma</b>	Me kënd 90°
<b>Dizenjo</b>	Kokë flanaxhe adaptor
<b>Montimi</b>	Me vrima për montim me bulona
<b>Furnizohet së bashku me</b>	2 gjysmë-flanaxha, set-in e bulonave dhe guarnicionin O-Ring
<b>Materiali</b>	Çelik S355J2G3 (C22)
<b>Sipërfaqja</b>	E zezë e vajosur
<b>Shënim</b>	

**SAE**



**HANSA FLEX**

Presioni maksimal i treguar i referohet flanaxhës. Presioni i punës përcaktohet nga tubi metalik (spesori i tubit) dhe nga cilësia e tubit.

Kodi	Seria e Presionit	Seria	ØRAD (mm)	P.max.(Bar)	Size	A	A1 (mm)	SW	C (mm)	D (mm)	E (mm)	F(mm)	I (mm)	S1 (mm)	S2 (mm)	S3 (mm)	L (mm)
SFCE 3001-90 L 15 U	3000 PSI	L	15	315	1/2"	M 22x1.5	30.2	22	38.1	54	17.5	45.6	7.0	40	43.0	58	8.7
SFCE 3002-90 L 22 U	3000 PSI	L	22	160	3/4"	M 30 x 2	38.1	30	47.6	65	22.2	51.8	7.5	59	63.5	80	10.7
SFCE 3003-90 L 28 U	3000 PSI	L	28	160	1"	M 36 x 2	44.4	36	52.4	70	26.2	58.4	7.5	68	75.5	80	10.7
SFCE 3004-90 L 35 U	3000 PSI	L	35	160	1.1/4"	M 45 x 2	50.8	46	58.7	79	30.2	72.6	10.5	86	94.5	116	-
SFCE 3005-90 L 42 U	3000 PSI	L	42	160	1.1/2"	M 52 x 2	60.3	55	69.9	94	35.7	82.6	11.0	98	104.0	127	13.5
SFCE 3001-90 S 16 U	3000 PSI	L S	16	350	1/2"	M 24x1.5	30.2	24	38.1	54	17.5	45.6	7.5	40	42.5	60	8.7
SFCE 3003-90 S 25 U	3000 PSI	L S	25	315	1"	M 36 x 2	44.4	36	52.4	70	26.2	58.4	12.0	68	71.0	95	10.7
SFCE 3003-90 S 30 U	3000 PSI	L S	30	315	1"	M 42 x 2	44.4	46	52.4	70	26.2	58.4	13.5	68	69.5	96	10.7
SFCE 3005-90 S 38 U	3000 PSI	L S	38	210	1.1/2"	M 52 x 2	60.3	55	69.9	94	35.7	82.6	16.0	98	99.0	130	13.5
SFCE 6001-90 S 16 U	6000 PSI	S	16	400	1/2"	M 24x1.5	31.8	24	40.5	56	18.2	47.2	8.5	40	41.5	60	8.7
SFCE 6002-90 S 25 U	6000 PSI	S	25	400	3/4"	M 36 x 2	41.3	36	50.8	71	23.8	60.0	12.0	62	59.0	83	10.7
SFCE 6002-90 S 30 U	6000 PSI	S	30	400	3/4"	M 42 x 2	41.3	46	50.8	71	23.8	60.0	13.5	62	57.5	84	10.7
SFCE 6003-90 S 25 U	6000 PSI	S	25	400	1"	M 36 x 2	47.6	36	57.2	81	27.8	69.6	12.0	74	73.0	97	-
SFCE 6003-90 S 30 U	6000 PSI	S	30	400	1"	M 42 x 2	47.6	46	57.2	81	27.8	69.6	13.5	74	71.5	98	-
SFCE 6004-90 S 38 U	6000 PSI	S	38	315	1.1/4"	M 52 x 2	54.0	55	66.7	95	31.8	77.2	16.0	96	91.0	122	-
SFCE 6005-90 S 38 U	6000 PSI	S	38	315	1.1/2"	M 52 x 2	63.5	55	79.4	113	36.5	95.0	16.0	111	91.0	122	17.0

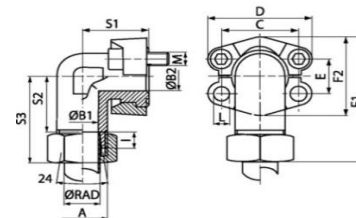


**HANSA FLEX**

**KOKE FLLANXHE SAE, ADAPTOR me kënd 90°, e farkëtuar, me fileta të jashtme METRIKE dhe fole konike 24°..... WFG (3000 PSI)**

<b>Cilësitë</b>	
<b>Seria e presionit</b>	3000 PSI (210 Bar)
<b>Standarti</b>	DIN 3901/3902
<b>Trajtimi</b>	E farkëtuar
<b>Forma</b>	Me kënd 90°
<b>Dizenjo</b>	24°
<b>Furnizohet</b>	Vetëm flanaxha
<b>Materiali</b>	Çelik S355J2G3 (ST52,3)
<b>Sipërfaqja</b>	E elektro-galvanizuar
<b>Shënim</b>	

**SAE**



**HANSA FLEX**

Presioni maksimal i treguar i referohet flanaxhës. Presioni i punës përcaktohet nga tubi metalik (spesori i tubit) dhe nga cilësia e tubit.

Kodi	Seria	ØRAD (mm)	Presioni max. (Bar)	Size	A	B1 (mm)	B2 (mm)	F1 (mm)	I (mm)	S1 (mm)	S2 (mm)	S3 (mm)	L (mm)	M (Metr.)
WFG 3001/L 15	L	15	315	1/2"	M 22x1.5	12	11	66.8	7.0	39	29.0	44	8.7	M 8 x 25
WFG 3002/L 18	L	18	315	3/4"	M 26x1.5	15	19	73.9	7.5	42	31.5	48	10.7	M 10 x 35
WFG 3002/L 22	L	22	160	3/4"	M 30 x 2	19	19	75.9	7.5	42	33.5	50	10.7	M 10 x 35
WFG 3003/L 28	L	28	160	1"	M 36 x 2	24	25	82.2	7.5	45	36.5	53	10.7	M 10 x 35
WFG 3004/L 35	L	35	160	1.1/4"	M 45 x 2	30	27	104.3	10.5	50	46.5	68	-	*2
WFG 3005/L 42	L	42	160	1.1/2"	M 52 x 2	36	36	118.2	11.0	55	47.0	57	13.5	M 12 x 40
WFG 3001/S 16	S	16	350	1/2"	M 24x1.5	12	11	70.8	8.5	39	29.5	48	8.7	M 8 x 25
WFG 3002/S 20	S	20	350	3/4"	M 30 x 2	16	19	79.9	10.5	42	32.5	54	10.7	M 10 x 35
WFG 3002/S 25	S	25	350	3/4"	M 36 x 2	17	19	82.9	12.0	42	33.0	57	10.7	M 10 x 35
WFG 3003/S 25	S	25	315	1"	M 36 x 2	20	25	91.2	12.0	45	38.0	62	10.7	M 10 x 35
WFG 3003/S 30	S	30	315	1"	M 42 x 2	24	25	92.2	13.5	45	36.5	63	10.7	M 10 x 35
WFG 3004/S 25	S	25	250	1.1/4"	M 36 x 2	20	27	103.3	12.0	50	43.0	67	-	*2
WFG 3004/S 30	S	30	250	1.1/4"	M 42 x 2	25	27	106.3	13.5	50	43.5	70	-	*2
WFG 3004/S 38	S	38	250	1.1/4"	M 52 x 2	28	27	110.3	16.0	50	43.0	74	-	*2
WFG 3005/S 38	S	38	200	1.1/2"	M 52 x 2	32	36	128.2	16.0	55	48.0	58	13.5	M 12 x 40



**EMC Engineering Maintenance Center**

Bazuar në mënyrën e ndërtimit të makinerive dhe pajisjeve, sistemeve të tyre, mënyrës së funksionimit dhe një sërë elementësh të tjerë, për kryerjen e shërbimeve të mirëmbajtjes nevojiten pajisjet dhe veglat e përshtatshme të punës.

**SIGURIA E PARA**

**ASGJE NUK VLEN ME**

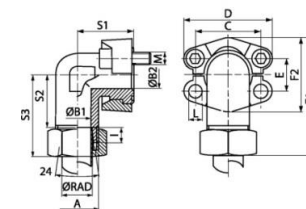


**HANSA FLEX**

**KOKE FLLANXHE SAE, ADAPTOR me kënd 90°, e farkëtuar, me fileta të jashtëme METRIKE dhe fole konike 24° ..... WFG (6000 PSI)**

<b>Cilësitë</b>	
<b>Seria e presionit</b>	6000 PSI (420 Bar)
<b>Standarti</b>	DIN 3901/3902
<b>Trajtimi</b>	E farkëtuar
<b>Forma</b>	Me kënd 90°
<b>Dizenjo</b>	24°
<b>Furnizohet</b>	Vetëm flanaxha
<b>Materiali</b>	Çelik S355J2G3 (ST52,3)
<b>Sipërfaqja</b>	E elektro-galvanizuar
<b>Shënim</b>	

**SAE**



**HANSA FLEX**

Presioni maksimal i treguar i referohet flanaxhës. Presioni i punës përcaktohet nga tubi metalik (spesori i tubit) dhe nga cilësia e tubit.

Kodi	Seria	ØRAD (mm)	Presioni max. (Bar)	Size	A	B1 (mm)	B2 (mm)	F1 (mm)	I (mm)	S1 (mm)	S2 (mm)	S3 (mm)	L (mm)	M (Metr.)
WFG 6001/S 16	S	16	400	1/2"	M24x1.5	12	12	71.6	8.5	39	29.4	48	8.7	M 8 x 30
WFG 6002/S 16	S	16	400	3/4"	M24x1.5	12	17	85.0	8.5	48	36.5	55	10.7	M 10 x 35
WFG 6002/S 20	S	20	400	3/4"	M 30 x 2	16	17	87.0	10.5	48	35.5	57	10.7	M 10 x 35
WFG 6002/S 25	S	25	400	3/4"	M 36 x 2	17	17	90.0	12.0	48	36.0	60	10.7	M 10 x 35
WFG 6003/S 25	S	25	400	1"	M 36 x 2	20	24	99.8	12.0	60	41.0	65	13.0	M 12 x 45
WFG 6003/S 30	S	30	400	1"	M 42 x 2	24	24	102.9	13.5	60	41.5	68	13.0	M 12 x 45
WFG 6004/S 30	S	30	400	1.1/4"	M 42 x 2	25	31	109.6	13.5	68	44.5	71	14.7	M 14 x 50
WFG 6004/S 38	S	38	350	1.1/4"	M 52 x 2	28	31	114.6	16.0	68	45.0	76	14.7	M 14 x 50
WFG 6005/S 38	S	38	350	1.1/2"	M 52 x 2	30	36	134.5	16.0	76	56.0	87	17.0	M 16 x 55



**EMC Engineering Maintenance Center**

A i njihni simbolet e sigurise?



**EMC Engineering Maintenance Center**

Linde H30D(393-01)/H2X393U02032/2007

Mirembajtja preventive bazohet mbi rekomandimet e prodhuesit.

EMC shpk ka evidentuar te gjitha sherbimet e rekomanduara per te githe llojet e mjeteve qe ka ne kontrate mirembajtje dhe i ndjek ato ne menyre rigoroze.

Ne rastet kur nuk gjenden librat e prodhuesit te makinerise, bazuar ne materiale shkencore, EMC shpk pergatit programin e mirembajtjes periodike.

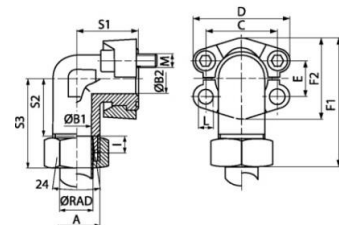
Tashme eshte fakt i pakundershtueshem qe mirembajtja kushton shume me pak se riparimi

Nr.	Objekti, Veprimi	500	1000	3000	6000
<b>1. Te pergjithshme</b>					
1	Pastrim mjeti (nese duhet)	K	K	K	K
2	Kontrolli dhe regjistrimi i pasqyrave	K	K	K	K
3	Lexim ne monitor i kodeve te difekteve dhe fshirja e tyre	K	K	K	K
4	Vendosje ne monitor e intervalit te MP te ardhshme	K	K	K	K
<b>2. Motorri</b>					
1	Zevendesim i vajit te motorrit	Z	Z	Z	Z
2	Zevendesim i filtrit te vajit te motorrit	Z	Z	Z	Z
3	Zevendesim i filtrit te naftes	Z	Z	Z	Z
4	Pastrim i radiatorit te ujit dhe kontroll per rrjedhje	K	K	K	K

KOKE FLLANXHE SAE, ADAPTOR me kënd 90°, e farkëtuar, me fileta të jashtëme METRIKE dhe fole konike 24° ..... WFG M (3000/6000 PSI)

<b>Cilësitë</b>	
<b>Standarti</b>	DIN 3901/3902
<b>Trajtimi</b>	E farkëtuar
<b>Forma</b>	Me kënd 90°
<b>Dizenjo</b>	24°
<b>Furnizohet së bashku me</b>	2 gjysmë-flanxha, set-in e bulonave dhe guarnicionin O-Ring
<b>Materiali</b>	Çelik S355J2G3 (ST52,3)
<b>Sipërfaqja</b>	E elektro-galvanizuar
<b>Shënim</b>	

**SAE**



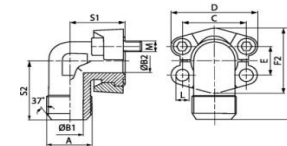
Presioni maksimal i treguar i referohet flanaxhës. Presioni i punës përcaktohet nga tubi metalik (spesori i tubit) dhe nga cilësia e tubit.

Kodi	Seria e Presionit	Seria	ØRAD (mm)	Presioni max.(Bar)	Size	A	B1 (mm)	B2 (mm)	C (mm)	D (mm)	E (mm)	F1 (mm)	F2 (mm)	l (mm)	S1 (mm)	S2 (mm)	S3 (mm)
WFG 3001/L 15 M	3000 PSI	L	15	315	1/2"	M 22x1.5	12	11	38.1	54.0	17.5	66.8	45.6	7.0	39	29.0	44
WFG 3001/S 16 M	3000 PSI	S	16	350	1/2"	M 24x1.5	12	11	38.1	54.0	17.5	70.8	45.6	8.5	39	29.5	48
WFG 3002/L 18 M	3000 PSI	L	18	315	3/4"	M 26x1.5	15	19	47.6	64.9	22.2	73.9	51.8	7.5	42	31.5	48
WFG 3002/L 22 M	3000 PSI	L	22	160	3/4"	M 30 x 2	19	19	47.6	64.9	22.2	75.9	51.8	7.5	42	33.5	50
WFG 3002/S 20 M	3000 PSI	S	20	350	3/4"	M 30 x 2	16	19	47.6	64.9	22.2	79.9	51.8	10.5	42	32.5	54
WFG 3002/S 25 M	3000 PSI	S	25	350	3/4"	M 36 x 2	17	19	47.6	64.9	22.2	82.9	51.8	12.0	42	33.0	57
WFG 3003/L 28 M	3000 PSI	L	28	160	1"	M 36 x 2	24	25	52.4	69.9	26.2	82.2	58.4	7.5	45	36.5	53
WFG 3003/S 25 M	3000 PSI	S	25	315	1"	M 36 x 2	20	25	52.4	69.9	26.2	91.2	58.4	12.0	45	38.0	62
WFG 3003/S 30 M	3000 PSI	S	30	315	1"	M 42 x 2	24	25	52.4	69.9	26.2	92.2	58.4	13.5	45	36.5	63
WFG 3004/L 35 M	3000 PSI	L	35	160	1.1/4"	M 45 x 2	30	27	58.7	79.4	30.2	104.3	72.6	10.5	50	46.5	68
WFG 3004/S 25 M	3000 PSI	S	25	250	1.1/4"	M 36 x 2	20	27	58.7	79.4	30.2	103.3	72.6	12.0	50	43.0	67
WFG 3004/S 30 M	3000 PSI	S	30	250	1.1/4"	M 42 x 2	25	27	58.7	79.4	30.2	106.3	72.6	13.5	50	43.5	70
WFG 3004/S 38 M	3000 PSI	S	38	250	1.1/4"	M 52 x 2	28	27	58.7	79.4	30.2	110.3	72.6	16.0	50	43.0	74
WFG 3005/L 42 M	3000 PSI	L	42	160	1.1/2"	M 52 x 2	36	36	69.9	93.8	35.7	118.2	82.4	11.0	76	56.0	77
WFG 3005/S 38 M	3000 PSI	S	38	200	1.1/2"	M 52 x 2	32	36	69.9	93.8	35.7	128.2	82.4	16.0	76	56.0	87
WFG 6001/S 16 M	6000 PSI	S	16	400	1/2"	M 24x1.5	12	12	40.5	56.4	18.2	71.6	47.2	8.5	39	29.4	48
WFG 6002/S 16 M	6000 PSI	S	16	400	3/4"	M 24x1.5	12	17	50.8	71.3	23.8	85.0	60.0	8.5	48	36.5	55
WFG 6002/S 20 M	6000 PSI	S	20	400	3/4"	M 30 x 2	16	17	50.8	71.3	23.8	87.0	60.0	10.5	48	35.5	57
WFG 6002/S 25 M	6000 PSI	S	25	400	3/4"	M 36 x 2	17	17	50.8	71.3	23.8	90.0	60.0	12.0	48	36.0	60
WFG 6003/S 25 M	6000 PSI	S	25	400	1"	M 36 x 2	20	24	57.2	81.0	27.8	99.8	69.0	12.0	60	41.0	65
WFG 6003/S 30 M	6000 PSI	S	30	400	1"	M 42 x 2	24	24	57.2	81.0	27.8	102.9	69.0	13.5	60	41.5	68
WFG 6004/S 30 M	6000 PSI	S	30	400	1.1/4"	M 42 x 2	25	31	66.7	95.2	31.8	109.6	77.2	13.5	68	44.5	71
WFG 6004/S 38 M	6000 PSI	S	38	350	1.1/4"	M 52 x 2	28	31	66.7	95.2	31.8	114.6	77.2	16.0	68	45.0	76
WFG6004/S38-400M	6000 PSI	S	38	400	1.1/4"	M 52 x 2	22	24	66.7	95.2	31.8	114.5	77.2	16.0	68	45.0	76
WFG 6005/S 38 M	6000 PSI	S	38	350	1.1/2"	M 52 x 2	30	36	79.4	112.8	36.5	134.5	95.0	16.0	76	56.0	87

**KOKE FLLANXHE SAE, ADAPTOR me kënd 90°, e farkëtuar, me fileta të jashtëme UN/UNF dhe kokë konike 74°..... WFG JIC (3000 PSI)**

<b>Cilësitë</b>	
<b>Seria e presionit</b>	3000 PSI (210 Bar)
<b>Standarti</b>	SAE J 518 C dhe ISO 6162
<b>Trajtimi</b>	E farkëtuar
<b>Forma</b>	Me kënd 90°
<b>Dizenjo</b>	74°
<b>Furnizohet</b>	Vetëm flanaxha
<b>Materiali</b>	Çelik S355J2G3 (ST52,3)
<b>Sipërfaqja</b>	E elektro-galvanizuar
<b>Shënim</b>	

**SAE**



**HANSA FLEX**

Presioni maksimal i treguar i referohet flanaxhës. Presioni i punës përcaktohet nga tubi metalik (spesori i tubit) dhe nga cilësia e tubit.

Kodi	Presioni max.Bar	Size	A	B1 (mm)	B2 (mm)	E (mm)	F1 (mm)	S1 (mm)	S2 (mm)	L (mm)	M (Metr.)	M (Unc)
WFG 3001 JIC 3/4	350	1/2"	UNF 3/4" -16	9.9	13	17.5	60.8	38	38	8.7	M 8 x 25	5/16" x 1.1/4"
WFG 3001 JIC 7/8	350	1/2"	UNF 7/8" -14	12.3	13	17.5	60.8	38	38	8.7	M 8 x 25	5/16" x 1.1/4"
WFG3002JIC11/16	350	3/4"	UNF 1 1/16" -12	15.5	19	22.2	70.9	42	45	10.7	M 10 x 30	3/8" x 1.1/2"
WFG3002JIC15/16	350	3/4"	UN 1.5/16" -12	21.5	19	22.2	70.9	42	45	10.7	M 10 x 30	3/8" x 1.1/2"
WFG 3002 JIC 7/8	350	3/4"	UNF 7/8" -14	12.3	19	22.2	70.9	42	45	10.7	M 10 x 30	3/8" x 1.1/2"
WFG3003JIC11/16	315	1"	UNF 1 1/16" -12	15.5	24	26.2	79.2	45	50	10.7	M 10 x 30	3/8" x 1.1/2"
WFG3003JIC15/16	315	1"	UN 1.5/16" -12	21.5	24	26.2	79.2	45	50	10.7	M 10 x 30	3/8" x 1.1/2"
WFG 3003 JIC 1 5/8	315	1"	UN 1.5/8" -12	27.5	24	26.2	79.2	45	50	10.7	M 10 x 30	3/8" x 1.1/2"
WFG3004JIC15/16	250	1.1/4"	UN 1.5/16" -12	21.5	31	30.2	85.3	50	59	-	*2	7/16" x 1.1/2"
WFG 3004 JIC 1 5/8	250	1.1/4"	UN 1.5/8" -12	27.5	31	30.2	85.3	50	59	-	*2	7/16" x 1.1/2"
WFG 3005 JIC 1 5/8	200	1.1/2"	UN 1.5/8" -12	27.5	38	35.7	117.1	76	76	13.5	M 12 x 35	1/2" x 1.1/2"
WFG 3005 JIC 1 7/8	200	1.1/2"	UN 1.7/8" -12	33.0	38	35.7	117.1	76	76	13.5	M 12 x 35	1/2" x 1.1/2"

**EMC ENGINEERING Maintenance Center**

**EMC Engineering Maintenance Center**

A e dini se çfare jane sistemet "LOAD SENSING"?

**EMC ENGINEERING Maintenance Center**

**EMC Engineering Maintenance Center**

**HANSA FLEX**

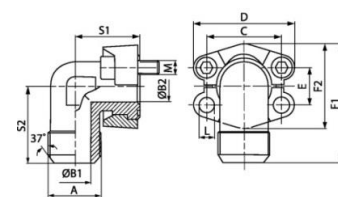
EMC shpk eshte partner zyrtar i kompanise gjermane HANSA FLEX. Hansa Flex eshte nje furnitor i jashtezakonshem i materialeve hidraulike. Te gjeni qaq shume produkte ne nje furnitor te vetem eshte nje lehtesi shume e madhe.



**KOKE FLLANXHE SAE, ADAPTOR me kënd 90°, e farkëtuar, me fileta të jashtëme UN/UNF dhe kokë konike 74°..... WFG JIC (6000 PSI)**

<b>Cilësitë</b>	
<b>Seria e presionit</b>	6000 PSI (420 Bar)
<b>Standarti</b>	SAE J 518 C dhe ISO 6162
<b>Trajtimi</b>	E farkëtuar
<b>Forma</b>	Me kënd 90°
<b>Dizenjo</b>	Kokë fllanxhe adaptor, me fileta të jashtëme UN/UNF dhe kokë konike 74°
<b>Furnizohet</b>	Vetëm fllanxha
<b>Materiali</b>	Çelik S355J2G3 (ST52,3)
<b>Sipërfaqja</b>	E elektro-galvanizuar
<b>Shënim</b>	

**SAE**



**HANSA FLEX**

Presioni maksimal i treguar i referohet fllanxhës. Presioni i punës përcaktohet nga tubi metalik (spesori i tubit) dhe nga cilësia e tubit.

Kodi	Presioni max(Bar)	Size	A	B1 (mm)	B2 (mm)	E (mm)	F1 (mm)	S1 (mm)	S2 (mm)	L (mm)	M (Metr.)	M (Unc)
WFG 6001 JIC 3/4	400	1/2"	UNF 3/4" -16	9.9	13	18.2	61.6	39	38	8.7	M 8 x 30	5/16" x 1.1/4"
WFG 6001 JIC 7/8	400	1/2"	UNF 7/8" -14	12.3	13	18.2	61.6	39	38	8.7	M 8 x 35	5/16" x 1.1/4"
WFG 6002 JIC 1 1/16	400	3/4"	UNF 1 1/16" -12	15.5	17	23.8	78.0	48	48	10.7	M 10 x 35	3/8" x 1.1/2"
WFG 6002 JIC 1 5/16	400	3/4"	UN 1.5/16" -12	21.5	17	23.8	78.0	48	48	10.7	M 10 x 35	3/8" x 1.1/2"
WFG 6002 JIC 7/8	400	3/4"	UNF 7/8" -14	12.3	17	23.8	78.0	48	48	10.7	M 10 x 35	3/8" x 1.1/2"
WFG 6003 JIC 1 1/16	400	1"	UNF 1 1/16" -12	15.5	24	27.8	99.0	60	60	-	M 12 x 45	7/16" x 1.3/4"
WFG 6003 JIC 1 5/16	400	1"	UN 1.5/16" -12	21.5	24	27.8	99.0	60	60	-	M 12 x 45	7/16" x 1.3/4"
WFG 6003 JIC 1 5/8	400	1"	UN 1.5/8" -12	27.5	24	27.8	99.0	60	60	-	M 12 x 45	7/16" x 1.1/2"
WFG 6004 JIC 1 5/16	400	1.1/4"	UN 1.5/16" -12	21.5	30	31.8	115.5	68	68	-	M 14 x 50	1/2" x 1.3/4"
WFG 6004 JIC 1 5/8	400	1.1/4"	UN 1.5/8" -12	27.5	30	31.8	115.5	68	68	-	M 14 x 50	1/2" x 1.3/4"
WFG 6004 JIC 1 7/8	400	1.1/4"	UN 1.7/8" -12	33.0	30	31.8	115.5	68	68	-	M 14 x 50	1/2" x 1.3/4"
WFG 6005 JIC 1 5/8	400	1.1/2"	UN 1.5/8" -12	27.5	32	36.5	133.0	76	76	17.0	M 16 x 55	5/8" x 2"
WFG 6005 JIC 1 7/8	400	1.1/2"	UN 1.7/8" -12	33.0	32	36.5	133.0	76	76	17.0	M 16 x 55	5/8" x 2"

**EMC ENGINEERING Maintenance Center**  
**EMC Engineering Maintenance Center**

A e dini se kush quhen komponente hidraulik?

**EMC ENGINEERING Maintenance Center**  
**EMC Engineering Maintenance Center**

Identifikimi i defektit ne sistemet hidraulike eshte nje proces llogjik. Gjithashtu eshte edhe nje proces qe duhet te zhvillohet sipas nje radhe te caktuar veprimesh.

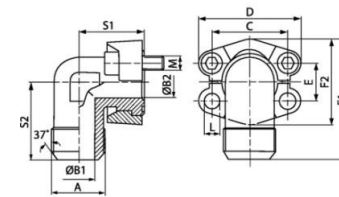
Ne qofte se ju teknike te mesem dhe te larte, i qendroni besnik rregullit te percaktuar nga eksperte te kesaj fushe, do te shihni qe rezultati eshte i garantuar.

Mos harroni qe respekti fitohet me shume pune dhe djerse. Se pari duhet te fitoni respektin e vetvetes dhe pastaj edhe respektin e te tjereve. Pas kesaj do te jeni te kerkuar nga te gjithë. Kjo do te thote qe do te mund t'i vendosni vete kushtet e punes. Nese keni deshire EMC shpk ju ndihmon te beheni ekspert.

**KOKE FLLANXHE SAE, ADAPTOR me kënd 90°, e farkëtuar, me fileta të jashtëme UN/UNF dhe kokë konike 74° ..... WFG JIC M (3000/6000 PSI)**

<b>Cilësitë</b>	
<b>Standarti</b>	SAE J 518 C dhe ISO 6162
<b>Trajtimi</b>	E farkëtuar
<b>Forma</b>	Me kënd 90°
<b>Dizenjo</b>	74°
<b>Furnizohet së bashku me</b>	2 gjysmë-flanxha, set-in e bulonave dhe guarnicionin O-Ring
<b>Materiali</b>	Çelik S355J2G3 (ST52,3)
<b>Sipërfaqja</b>	E elektro-galvanizuar
<b>Shënim</b>	

**SAE**



**HANSA FLEX**

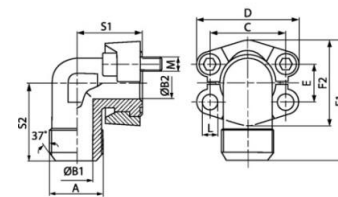
Presioni maksimal i treguar i referohet flanaxhës. Presioni i punës përcaktohet nga tubi metalik (spesori i tubit) dhe nga cilësia e tubit.

Kodi	Seria e Presionit	Presioni max. (Bar)	Size	A	B1 (mm)	B2 (mm)	C (mm)	D (mm)	E (mm)	F1 (mm)	F2 (mm)	S1 (mm)	S2 (mm)	L (mm)	Bulonat
WFG3001JIC3/4M	3000 PSI	350	1/2"	UNF 3/4" -16	9.9	13	38.1	54	17.5	60.8	45.6	38	38	8.7	(4 x) M 8 x 25
WFG 3001 JIC 7/8 M	3000 PSI	350	1/2"	UNF 7/8" -14	12.3	13	38.1	54	17.5	60.8	45.6	38	38	8.7	(4 x) M 8 x 25
WFG3002JIC11/16M	3000 PSI	350	3/4"	UNF 1 1/16" -12	15.5	19	47.6	65	22.2	70.9	51.8	42	45	10.7	(4 x) M 10 x 30
WFG 3002 JIC 1 5/16M	3000 PSI	350	3/4"	UN 1.5/16" -12	21.5	19	47.6	65	22.2	70.9	51.8	42	45	10.7	(4 x) M 10 x 30
WFG 3002 JIC 7/8 M	3000 PSI	350	3/4"	UNF 7/8" -14	12.3	19	47.6	65	22.2	70.9	51.8	42	45	10.7	(4 x) M 10 x 30
WFG 3003 JIC 1 1/16M	3000 PSI	315	1"	UNF 1 1/16" -12	15.5	24	52.4	70	26.2	79.2	58.4	45	50	10.7	(4 x) M 10 x 30
WFG 3003 JIC 1 5/16M	3000 PSI	315	1"	UN 1.5/16" -12	21.5	24	52.4	70	26.2	79.2	58.4	45	50	10.7	(4 x) M 10 x 30
WFG 3003 JIC 1 5/8 M	3000 PSI	315	1"	UN 1.5/8" -12	27.5	24	52.4	70	26.2	79.2	58.4	45	50	10.7	(4 x) M 10 x 30
WFG 3004 JIC 1 5/16M	3000 PSI	250	1.1/4"	UN 1.5/16" -12	21.5	31	58.7	79	30.2	85.3	72.6	50	59	-	*2
WFG 3004 JIC 1 5/8 M	3000 PSI	250	1.1/4"	UN 1.5/8" -12	27.5	31	58.7	79	30.2	85.3	72.6	50	59	-	*2
WFG 3005 JIC 1 5/8 M	3000 PSI	200	1.1/2"	UN 1.5/8" -12	27.5	38	69.9	94	35.7	117.1	82.2	76	76	13.5	(4 x) M 12 x 35
WFG 3005 JIC 1 7/8 M	3000 PSI	200	1.1/2"	UN 1.7/8" -12	33.0	38	69.9	94	35.7	117.1	82.2	76	76	13.5	(4 x) M 12 x 35
WFG 6001 JIC 3/4 M	6000 PSI	400	1/2"	UNF 3/4" -16	9.9	13	40.5	56	18.2	61.6	47.2	39	38	8.7	(4 x) M 8 x 30
WFG 6001 JIC 7/8 M	6000 PSI	400	1/2"	UNF 7/8" -14	12.3	13	40.5	56	18.2	61.6	47.2	39	38	8.7	(4 x) M 8 x 35
WFG 6002 JIC 1 1/16M	6000 PSI	400	3/4"	UNF 1 1/16" -12	15.5	17	50.8	71	23.8	78.0	60.0	48	48	10.7	(4 x) M 10 x 35
WFG 6002 JIC 1 5/16M	6000 PSI	400	3/4"	UN 1.5/16" -12	21.5	17	50.8	71	23.8	78.0	60.0	48	48	10.7	(4 x) M 10 x 35
WFG 6002 JIC 7/8 M	6000 PSI	400	3/4"	UNF 7/8" -14	12.3	17	50.8	71	23.8	78.0	60.0	48	48	10.7	(4 x) M 10 x 35
WFG 6003 JIC 1 1/16M	6000 PSI	400	1"	UNF 1 1/16" -12	15.5	24	57.2	81	27.8	99.0	69.9	60	60	-	(4 x) M 12 x 45
WFG 6003 JIC 1 5/16M	6000 PSI	400	1"	UN 1.5/16" -12	21.5	24	57.2	81	27.8	99.0	69.9	60	60	-	(4 x) M 12 x 45
WFG 6003 JIC 1 5/8 M	6000 PSI	400	1"	UN 1.5/8" -12	27.5	24	57.2	81	27.8	99.0	69.9	60	60	-	(4 x) M 12 x 45
WFG 6004 JIC 1 5/16M	6000 PSI	400	1.1/4"	UN 1.5/16" -12	21.5	30	66.7	95	31.8	115.5	77.2	68	68	-	(4 x) M 14 x 50
WFG 6004 JIC 1 5/8 M	6000 PSI	400	1.1/4"	UN 1.5/8" -12	27.5	30	66.7	95	31.8	115.5	77.2	68	68	-	(4 x) M 14 x 50
WFG 6004 JIC 1 7/8 M	6000 PSI	400	1.1/4"	UN 1.7/8" -12	33.0	30	66.7	95	31.8	115.5	77.2	68	68	-	(4 x) M 14 x 50
WFG 6005 JIC 1 5/8 M	6000 PSI	400	1.1/2"	UN 1.5/8" -12	27.5	32	79.4	113	36.5	133.0	95.0	76	76	17.0	(4 x) M 16 x 55
WFG 6005 JIC 1 7/8 M	6000 PSI	400	1.1/2"	UN 1.7/8" -12	33.0	32	79.4	113	36.5	133.0	95.0	76	76	17.0	(4 x) M 16 x 55

**KOKE FLLANXHE SAE, ADAPTOR me kënd 90°, e farkëtuar, me fileta të jashtëme UN/UNF dhe kokë konike 74°..... WFG JIC U (3000/6000 PSI)**

<b>Cilësitë</b>	
<b>Standarti</b>	SAE J 518 C dhe ISO 6162
<b>Trajtimi</b>	E farkëtuar
<b>Forma</b>	Me kënd 90°
<b>Dizenjo</b>	Kokë flanaxhe adaptor, me fileta të jashtëme UN/UNF dhe kokë konike 74°
<b>Furnizohet së bashku me</b>	2 gjysmë-flanaxha, set-in e bulonave dhe guarnicionin O-Ring
<b>Materiali</b>	Çelik S355J2G3 (ST52,3)
<b>Sipërfaqja</b>	E elektro-galvanizuar

**SAE**



**HANSA FLEX**

Presioni maksimal i treguar i referohet flanaxhës. Presioni i punës përcaktohet nga tubi metalik (spesori i tubit) dhe nga cilësia e tubit.

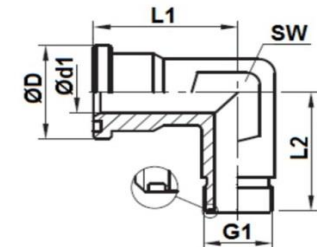
Kodi	Seria e Presionit	Presioni max. (Bar)	Size	A	B1 (mm)	B2 (mm)	C (mm)	D (mm)	E (mm)	F1 (mm)	F2 (mm)	S1 (mm)	S2 (mm)	L (mm)	Bulonat
WFG 3001 JIC 3/4 U	3000 PSI	350	1/2"	UNF 3/4" -16	9.9	13	38.1	54	17.5	60.8	45.6	38	38	8.7	(4 x) UNC 5/16 x 1.1/4
WFG 3001 JIC 7/8 U	3000 PSI	350	1/2"	UNF 7/8" -14	12.3	13	38.1	54	17.5	60.8	45.6	38	38	8.7	(4 x) UNC 5/16 x 1.1/4
WFG 3002 JIC 1 1/16U	3000 PSI	350	3/4"	UNF 1 1/16" -12	15.5	19	47.6	65	22.2	70.9	51.8	42	45	10.7	(4 x) UNC 3/8 x 1.1/2
WFG 3002 JIC 1 5/16U	3000 PSI	350	3/4"	UN 1.5/16" -12	21.5	19	47.6	65	22.2	70.9	51.8	42	45	10.7	(4 x) UNC 3/8 x 1.1/2
WFG 3002 JIC 7/8 U	3000 PSI	350	3/4"	UNF 7/8" -14	12.3	19	47.6	65	22.2	70.9	51.8	42	45	10.7	(4 x) UNC 3/8 x 1.1/2
WFG 3003 JIC 1 1/16U	3000 PSI	315	1"	UNF 1 1/16" -12	15.5	24	52.4	70	26.2	79.2	58.4	45	50	10.7	(4 x) UNC 3/8 x 1.1/2
WFG 3003 JIC 1 5/16U	3000 PSI	315	1"	UN 1.5/16" -12	21.5	24	52.4	70	26.2	79.2	58.4	45	50	10.7	(4 x) UNC 3/8 x 1.1/2
WFG 3003 JIC 1 5/8 U	3000 PSI	315	1"	UN 1.5/8" -12	27.5	24	52.4	70	26.2	79.2	58.4	45	50	10.7	(4 x) UNC 3/8 x 1.1/2
WFG 3004 JIC 1 5/16U	3000 PSI	250	1.1/4"	UN 1.5/16" -12	21.5	31	58.7	79	30.2	85.3	72.6	50	59	-	(4 x) UNC 7/16 x 1.1/2
WFG 3004 JIC 1 5/8 U	3000 PSI	250	1.1/4"	UN 1.5/8" -12	27.5	31	58.7	79	30.2	85.3	72.6	50	59	-	(4 x) UNC 7/16 x 1.1/2
WFG 3005 JIC 1 5/8 U	3000 PSI	200	1.1/2"	UN 1.5/8" -12	27.5	38	69.9	94	35.7	117.1	82.2	76	76	13.5	(4 x) UNC 1/2 x 1.3/4
WFG 3005 JIC 1 7/8 U	3000 PSI	200	1.1/2"	UN 1.7/8" -12	33.0	38	69.9	94	35.7	117.1	82.2	76	76	13.5	(4 x) UNC 1/2 x 1.3/4
WFG 6001 JIC 3/4 U	6000 PSI	400	1/2"	UNF 3/4" -16	9.9	13	40.5	56	18.2	61.6	47.2	39	38	8.7	(4 x) UNC 5/16 x 1.1/4
WFG 6001 JIC 7/8 U	6000 PSI	400	1/2"	UNF 7/8" -14	12.3	13	40.5	56	18.2	61.6	47.2	39	38	8.7	(4 x) UNC 5/16 x 1.1/4
WFG 6002 JIC 1 1/16U	6000 PSI	400	3/4"	UNF 1 1/16" -12	15.5	17	50.8	71	23.8	78.0	60.0	48	48	10.7	(4 x) UNC 3/8 x 1.1/2
WFG 6002 JIC 1 5/16U	6000 PSI	400	3/4"	UN 1.5/16" -12	21.5	17	50.8	71	23.8	78.0	60.0	48	48	10.7	(4 x) UNC 3/8 x 1.1/2
WFG 6002 JIC 7/8 U	6000 PSI	400	3/4"	UNF 7/8" -14	12.3	17	50.8	71	23.8	78.0	60.0	48	48	10.7	(4 x) UNC 3/8 x 1.1/2
WFG 6003 JIC 1 1/16U	6000 PSI	400	1"	UNF 1 1/16" -12	15.5	24	57.2	81	27.8	99.0	69.9	60	60	-	(4 x) UNC 7/16 x 1.3/4
WFG 6003 JIC 1 5/16U	6000 PSI	400	1"	UN 1.5/16" -12	21.5	24	57.2	81	27.8	99.0	69.9	60	60	-	(4 x) UNC 7/16 x 1.3/4
WFG 6003 JIC 1 5/8 U	6000 PSI	400	1"	UN 1.5/8" -12	27.5	24	57.2	81	27.8	99.0	69.9	60	60	-	(4 x) UNC 7/16 x 1.3/4
WFG 6004 JIC 1 5/16U	6000 PSI	400	1.1/4"	UN 1.5/16" -12	21.5	30	66.7	95	31.8	115.5	77.2	68	68	-	(4 x) UNC 1/2 x 1.3/4
WFG 6004 JIC 1 5/8 U	6000 PSI	400	1.1/4"	UN 1.5/8" -12	27.5	30	66.7	95	31.8	115.5	77.2	68	68	-	(4 x) UNC 1/2 x 1.3/4
WFG 6004 JIC 1 7/8 U	6000 PSI	400	1.1/4"	UN 1.7/8" -12	33.0	30	66.7	95	31.8	115.5	77.2	68	68	-	(4 x) UNC 1/2 x 1.3/4
WFG 6005 JIC 1 5/8 U	6000 PSI	400	1.1/2"	UN 1.5/8" -12	27.5	32	79.4	113	36.5	133.0	95.0	76	76	17.0	(4 x) UNC 5/8 x 2
WFG 6005 JIC 1 7/8 U	6000 PSI	400	1.1/2"	UN 1.7/8" -12	33.0	32	79.4	113	36.5	133.0	95.0	76	76	17.0	(4 x) UNC 5/8 x 2



**KOKE FLLANXHE SAE, ADAPTOR me kënd 90°, me fileta të jashtëme ORFS (UN/UNF)..... WFG HJOF (3000 PSI)**

<b>Cilësitë</b>	
<b>Seria e presionit</b>	3000 PSI (210 Bar)
<b>Forma</b>	Me kënd 90°
<b>Dizenjo</b>	Kokë fllanxhe adaptor SAE, me fileta të jashtëme ORFS (UN/UNF)
<b>Furnizohet</b>	Vetëm fllanxha
<b>Materiali</b>	Çelik
<b>Sipërfaqja</b>	E elektro-galvanizuar

**SAE**



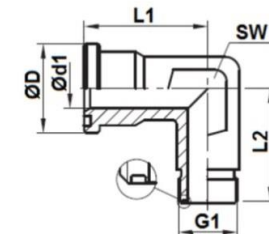
Kodi	Presioni maksimal (Bar)	G1	Size	ØD (mm)	Ød1 (mm)	L1 (mm)	L2 (mm)	Çelësi për montim SW
WFG 3002 HJOF 12	350	1.3/16" -12 UN	3/4"	38.3	15.5	42.0	45.0	30
WFG 3003 HJOF 16	315	1.7/16" -12 UN	1"	44.7	20.5	45.0	50.0	36
WFG 3004 HJOF 20	250	1.11/16" -12 UN	1.1/4"	51.0	26.0	50.0	59.0	41
WFG 3005 HJOF 24	200	2" -12 UN	1.1/2"	60.5	32.0	55.0	64.0	50

**HANSA FLEX**

**KOKE FLLANXHE SAE, ADAPTOR me kënd 90°, me fileta të jashtëme ORFS (UN/UNF)..... WFG HJOF (6000 PSI)**

<b>Cilësitë</b>	
<b>Seria e presionit</b>	6000 PSI (420 Bar)
<b>Forma</b>	Me kënd 90°
<b>Dizenjo</b>	Kokë fllanxhe adaptor SAE, me fileta të jashtëme ORFS (UN/UNF)
<b>Furnizohet</b>	Vetëm fllanxha
<b>Materiali</b>	Çelik
<b>Sipërfaqja</b>	E elektro-galvanizuar

**SAE**



Kodi	Presioni maksimal (Bar)	G1	Size	ØD (mm)	Ød1 (mm)	L1 (mm)	L2 (mm)	Çelësi për montim SW
WFG 6002 HJOF 12	400	1.3/16" -12 UN	3/4"	41.5	15.5	48.0	48.0	32
WFG 6003 HJOF 16	400	1.7/16" -12 UN	1"	47.8	20.5	60.0	55.0	41
WFG 6004 HJOF 20	350	1.11/16" -12 UN	1.1/4"	54.2	26.0	68.0	61.0	46
WFG 6005 HJOF 24	310	2" -12 UN	1.1/2"	63.7	32.0	76.0	72.0	50



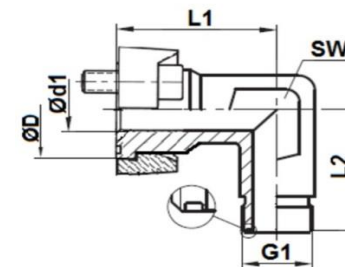
**EMC Engineering Maintenance Center**

Nese ne kompanine tuaj keni makineri me sisteme hidraulike, kontaktoni EMC shpk. Nuk do te pendoheni.

**KOKE FLLANXHE SAE, ADAPTOR me kënd 90°, me fileta të jashtëme ORFS (UN/UNF)..... WFG HJOF M (3000 PSI)**

<b>Cilësitë</b>	
<b>Seria e presionit</b>	3000 PSI (210 Bar)
<b>Forma</b>	Me kënd 90°
<b>Dizenjo</b>	Kokë fllanxhe adaptor SAE, me fileta të jashtëme ORFS (UN/UNF)
<b>Furnizohet së bashku me</b>	2 gjysmë-fllanxha, set-in e bulonave dhe guarnicionin O-Ring
<b>Materiali</b>	Çelik
<b>Sipërfaqja</b>	E elektro-galvanizuar

**SAE**



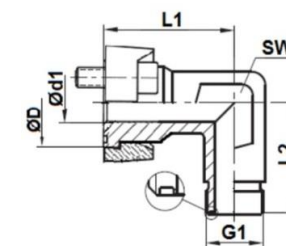
Kodi	Presioni maksimal (Bar)	G1	Size	ØD (mm)	Ød1 (mm)	L1 (mm)	L2 (mm)	Çelësi për montim SW
WFG 3002 HJOF12 M	350	1.3/16" -12 UN	3/4"	38.3	15.5	42.0	45.0	30
WFG 3003 HJOF 16 M	315	1.7/16" -12 UN	1"	44.7	20.5	45.0	50.0	36
WFG 3004 HJOF 20 M	250	1.11/16" -12 UN	1.1/4"	51.0	26.0	50.0	59.0	41
WFG 3005 HJOF 24 M	200	2" -12 UN	1.1/2"	60.5	32.0	55.0	64.0	50

**HANSA FLEX**

**KOKE FLLANXHE SAE, ADAPTOR me kënd 90°, me fileta të jashtëme ORFS (UN/UNF)..... WFG HJOF M (6000 PSI)**

<b>Cilësitë</b>	
<b>Seria e presionit</b>	6000 PSI (420 Bar)
<b>Forma</b>	Me kënd 90°
<b>Dizenjo</b>	Kokë fllanxhe adaptor SAE, me fileta të jashtëme ORFS (UN/UNF)
<b>Furnizohet së bashku me</b>	2 gjysmë-fllanxha, set-in e bulonave dhe guarnicionin O-Ring
<b>Materiali</b>	Çelik
<b>Sipërfaqja</b>	E elektro-galvanizuar

**SAE**



Kodi	Presioni maksimal (Bar)	G1	Size	ØD (mm)	Ød1 (mm)	L1 (mm)	L2 (mm)	Çelësi për montim SW
WFG 6002 HJOF 12 M	400	1.3/16" -12 UN	3/4"	41.5	15.5	48.0	48.0	32
WFG 6003 HJOF 16 M	400	1.7/16" -12 UN	1"	47.8	20.5	60.0	55.0	41
WFG 6004 HJOF 20 M	350	1.11/16" -12 UN	1.1/4"	54.2	26.0	68.0	61.0	46
WFG 6005 HJOF 24 M	310	2" -12 UN	1.1/2"	63.7	32.0	76.0	72.0	50

**EMC ENGINEERING**  
Maintenance Center

**EMC Engineering Maintenance Center**

EMC shpk eshte nje kompani e specializuar ne lidhje me mirembajtjen e sistemeve hidraulike

